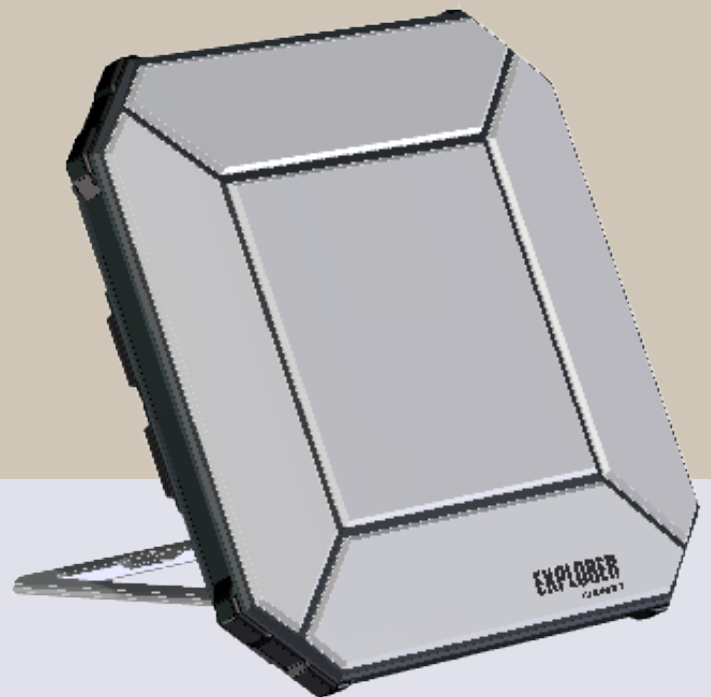


COBHAM EXPLORER 510



Ultra-Portable Satellite Broadband
Terminal

**HIGH DATA RATE
QUALITY
GUARANTEED
QUALITY OF
SERVICE FOR
STREAMING
SERVICES**

**ENHANCED
QUALITY OF
SERVICE**

**ULTRA-PORTABLE
& LIGHTWEIGHT
EASY TO
TRANSPORT AND
SET UP.**

**WIFI INTERFACE
AVAILABLE**

**CONNECT APP
FOR IOS AND
ANDROID
ACCESS AND
CONTROL YOUR
BGAN FROM YOUR
SMARTPHONE**



SATELLITE CONNECTIVITY MADE SIMPLE

The Explorer 510 is based on the Inmarsat BGAN network and is the ideal combination of performance and portability.

Smaller than a regular laptop and weighing less than 1.4 kg, this satellite terminal is easy to carry, deploy and offers IP connectivity up to 464 kbps (standard IP).

It also provides Streaming IP connectivity up to 128 kbps (guaranteed connectivity), voice capabilities and is equipped with a WiFi interface.



LAND



STREAMING



VOICE



BROADBAND
DATA



GPS

KEY FEATURES

CHARACTERISTIC

- **Dimensions:** 202 x 202 x 51.8 mm
- **Weight:** 1.4 kg
- **Interfaces:**
 - 1 x USB 2.0 Port
 - WLAN Access Point
- **Standard IP:** Send up to 464 kbps over a shared channel;
- **Streaming IP:** 32, 64 or 128 kbps
- **Wi-Fi access point** **NEW**
- **SMS** 160 characters supported
- **Ingress Protection:** IP66
- **Stand By Time:** 36 hours
- **Transmit Time:** 2 hours 15 min
- **Recharge Time:** Less than 3 hours

USER INTERFACE

- LED (WLAN, status)
- 1 Power button
- USB Host
- Cobham web interface

OTHER FEATURES

- Explorer Connect App for IOS and Android
 - Convert your smartphone into a satellite phone
 - Access your terminal from your smartphone
- Explorer LTE Modem for USB:
 - Connect to the local cellular network and use the Explorer 510 as wireless router for all your portable devices (smartphone, laptop, tablet)

INCLUDED IN THE PACK

- Explorer 510 Terminal
- Rechargeable Lithium Ion Battery
- Explorer Softbag
- USB to Ethernet converter cable
- 100-240 VAC power supply
- Multi-language quick start guide
- Multi-language webserver and embedded manual (ENG, FR, DE, ES, RU, JP and CN)