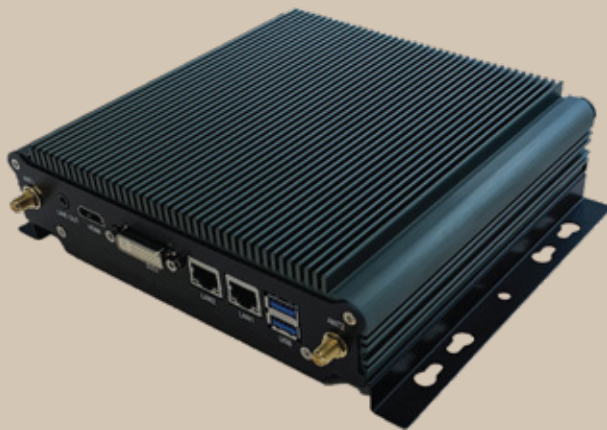




# ONEGATE AID COMPACT

LAND



Lightweight future-ready solution  
for uninterrupted communication





**FUTURE-READY SOLUTION  
ON A HIGHLY ADAPTIVE  
VIRTUAL PLATFORM**

**SEAMLESS CONNECTIVITY  
ENABLED WITH LEAST  
COST ROUTING**

**COMPLETE FILTRATION  
AND USAGE CONTROL  
OVER NETWORK TRAFFIC**

**PROACTIVE REMOTE  
MAINTENANCE BY  
DIGITALLY EXTENDED  
TEAM**

**SCALED FOR PORTABILITY  
AND EASY INSTALLATION**

Agile, lightweight, and easy to install, OneGate Aid Compact is a future-ready portable plug-and-play solution that allows you to stay connected when and where your mission takes you. Powered by Thuraya IP+ for stationed use and Thuraya Voyager for vehicular use over Thuraya's L-Band, OneGate Aid Compact offers easy control over your network while keeping costs at bay.

#### **IDEAL COMPANION FOR FIRST RESPONDERS**

Quickly set up a robust and lightweight solution in areas with no infrastructure. Empower first response teams with optimized network traffic that is prioritized for mission critical operations and proactive remote maintenance by a digitally extended team at HQ.

#### **SEAMLESS CONNECTIVITY ON-THE-GO**

Ensure continuous connectivity with OneGate Aid Compact's seamless failover between GSM and satellite links. Share live updates and real-time logistic concerns, track delivery status of supplies and resources, and enable telemedicine consultations that require an immediate response.

#### **CORPORATE & WELFARE COMMUNICATIONS**

Enable field staff to make phone and video calls, access emails and social media, and browse the internet without increasing your budget. Benefit from prepaid vouchers for voice and data services. With supporting Wi-Fi enablers, it's simple to 'bring your own device' to stay connected.

#### **KEY FEATURES**

##### **Local Dashboard**

- Status monitoring
- Data usage monitoring
- Voucher status

##### **Crew Management**

- Captive portal
- Prepaid voucher system
- Remote control center

##### **Local FTP Server**

- Two local shared folders for crew and corporate usage
- Can be synchronized with phone and PC

##### **Integrated WiFi Manager**

- Seamless APs provisioning
- Hotspot features

##### **QoS and WAN Optimization**

- Corporate traffic protection
- Full TCP acceleration and bandwidth optimization

##### **Filtration and Usage Control**

- Possibility to have two-stage filtration, onsite and at gateway
- Application identification and category classification
- Application of different profiles based on the nature of traffic (corporate/welfare)
- Advanced usage reports to enhance the filter design

