



AGILE SATCOM
SOLUTIONS FOR
HUMANITARIAN
SECTOR



SATELLITE IT UP!



#satelliteitup #sate
 #satelliteitup #satelliteitup #s
 #satelliteitup

FIND YOUR CLOSEST OFFICE

IEC TELECOM EUROPE

Cergy Pontoise: +33 1 40 17 08 03
 info-ea@iec-telecom.com

IEC TELECOM KAZAKHSTAN

Almaty: +7 727 258 85 33
 info-kz@iec-telecom.com

IEC TELECOM NORWAY

Oslo: +47 23 10 06 40
 info-no@iec-telecom.com

IEC TELECOM MIDDLE EAST

Dubai: +971 4 447 5180
 Abu Dhabi: +971 2 550 0446
 info-mea@iec-telecom.com

TRAKSAT (FRANCE)

Bordeaux: +33 9 54 49 95 01
 info@traksat.eu

IEC TELECOM SWEDEN

Stockholm: +46 10 33 00 533
 info-se@iec-telecom.com

IEC TELECOM SINGAPORE

Singapore: +65 6744 7925
 info-sg@iec-telecom.com

IEC TELECOM TURKEY

Istanbul: +90 216 970 16 08
 info-tk@iec-telecom.com

IEC TELECOM DENMARK

Copenhagen: +45 3131 4207
 info-no@iec-telecom.com

HUMANITARIAN SOLUTIONS

When disaster strikes, rescue teams need to act fast. IEC Telecom works alongside all the leading rescue agencies to enable them to deploy relief teams quickly.

With our expertise behind them, teams can have confidence that all satellite communications are reliable with secure, unfailing back-up systems – enabling staff to operate in the most challenging and remote conditions or dangerous regions, certain in the knowledge that our systems are tracking both people and assets. We have more than 350 satisfied humanitarian sector customers around the world using handsets and satcom equipment as well as 6,000 active SIM cards provided by IEC Telecom.

Our solutions are the number one choice for humanitarian teams throughout Africa, South and Latin America, Central Asia and Europe, emergency/first responders, and middle and long-term development missions.

GLOBAL SERVICE PROVIDER

IEC Telecom has strong commercial and technical relationships with major satellite operators across the world. With a multi-networks approach, IEC Telecom covers requirements across the complete communications lifecycle no matter where customers choose to do business.

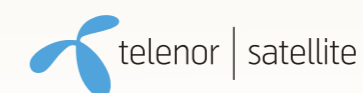
We are constantly looking for new partnerships to complete our portfolio and maintain very close relationships with our existing partners.



STARLINK



THURAYA



satelliteitup
 iteitup #satelliteitup #satelliteitup
 tup #satelliteitup
 #satelliteitup #satelliteitup



IMMEDIATE DISASTER RESPONSE

NGOs and disaster response teams require mobile, flexible and easy to deploy solutions that can provide the means for communication instantly. We offer lightweight and compact equipment to ensure enhanced mobility and shorter reaction time for operational units. With our Push-To-Talk solutions, communication groups are pre-defined, enabling response teams to be connected and ready to act at the first call.

Thanks to our 24-hour service and globally responsive capabilities, IEC Telecom can activate hundreds of satellite phone SIM cards within two hours, while urgently dispatching stocks of handsets, modems and hardware to aid agency teams loading planes ready to fly out to disaster zones.



MANAGED END-TO-END SOLUTIONS FOR DISASTER RECOVERY

With our telecommunications systems, aid agencies can consolidate their relief efforts over time, set up temporary offices using semi-fixed modems and access corporate applications, manage logistics or even use low bandwidth videoconferencing solutions.



COMMUNICATIONS SYSTEMS FOR HUMANITARIAN CAMPS

For longer term deployments and sustainable development missions, IEC Telecom can cover any specific need and offer high broadband data connectivity 'DSL-like', so that teams can access and share high data volumes, get a VPN connection, join videoconferences, etc.

From housing and food distribution to education, medicine and waste management, all field requirements can be managed through our connectivity services. We provide agile and affordable satcom solutions, enabling data exchange between camp units and headquarters to ensure the smooth operation of camp administration. This is applicable to both the camp management teams as well as the encampment inhabitants, for whom staying in touch with family members or the 'outside world' is so important. Thanks to our Wi-Fi enablers, both can benefit from a 'bring your own device' approach, staying connected using personal gadgets.



WELFARE SOLUTIONS

Enable your staff to make phone calls, use messaging, access social media and browse the internet without adding to your budget. Multiple team members can share the same Wi-Fi connection and benefit from prepaid vouchers for voice and data services to stay in touch with their friends and family, stay up-to-date with recent news, or undertake routine online tasks (such as checking bank statements or making payments) while stationed in the field.



PERSONAL SAFETY OF FRONT-LINE STAFF

To ensure personal safety in hazardous locations, our advanced tracking solutions allow a complete live view of your front-line staff positioning. Go even further by equipping each of your team members with individual sensor-based devices that can measure and report on the physiological data of your team members in real-time.

For long-term programmes, IEC Telecom can support missions with comprehensive e-health and e-learning solutions. For more details, please refer to the sections below.



E-HEALTH

Using satcom solutions, field missions can be equipped with mobile telemedicine hubs – enabling access to medical records and remote real-time consultations, with the facility to set up online systems for administration coordination (scheduling appointments, procurement operations, accounting, etc.)

E-health programs can benefit locally-stationed doctors by providing them with the opportunity to hold advisory sessions with experienced professionals based in any clinic across the world.



E-LEARNING

Lack of infrastructure disadvantages millions of children by preventing them from accessing even basic education. This is often the case for the millions of youngsters growing up in refugee camps, as well as being the experience in some areas of the developing world.

Satcom solutions provide the communication assets needed to address two core problems: lack of educators in the field and the absence of learning materials. In fact, e-learning programs are proving to be beneficial to adult learners too, helping displaced people to adapt to their new environment.



REMOTE MANAGEMENT & SUPPORT

Reliable back-up and technical support is essential where satellite connectivity is crucial.

IEC Telecom Support is available 24 hours a day, 365 days a year, online and via telephone.

The entire service experience from sales to installation and maintenance to upgrades comes with the professionalism and expertise you would expect. IEC Telecom's specialist teams take care of your connectivity requirements, enabling aid agencies and those operating in remote locations to concentrate on providing the essential services needed in the field.



#satelliteitup #satelliteitup #

#satelliteitup

#satelliteitup #satelli

IEC TELECOM
VALUE-ADDED SERVICES

satelliteitup

teitup #satelliteitup #satelliteitup

cup #satelliteitu

#satelliteitup #satelliteitup

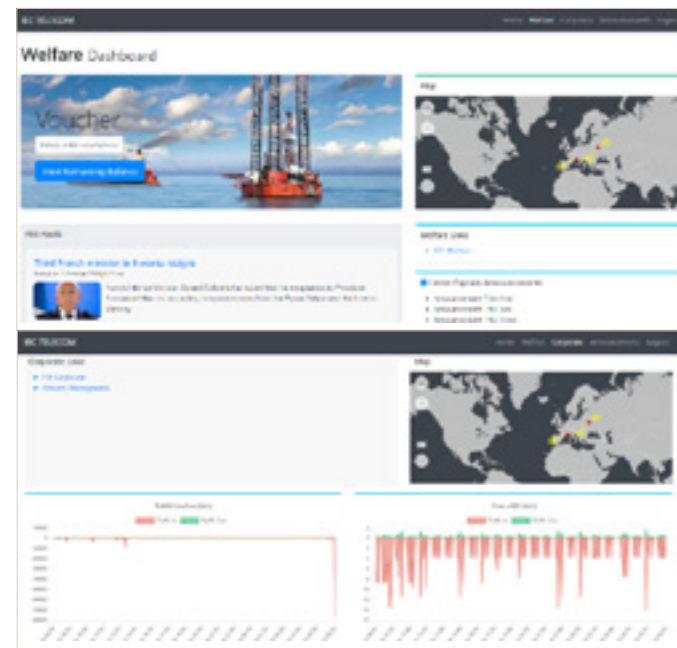
ONEGATE

360° NETWORK MANAGEMENT SOLUTION

Agile, lightweight, and easy to install, OneGate is a future-ready network management solution designed to operate in dual GSM/satcom mode. Designed with a customisable dashboard, OneGate allows to remotely manage the traffic, issue crew/guest vouchers, alter access levels as well as add, update or upgrade new applications. In addition, this system comes with an inbuilt Wi-Fi controller and superior cyber security toolkit. Lastly, it optimises the default bandwidth while automatically routing data over the least-cost network available, thus, delivering the best user experience at an optimal fee.

LOCAL DASHBOARD

- Protected access to the corporate dashboard
- Voucher monitoring
- Full visibility over WAN links data and bandwidth usage
- Access to the hotspot management portal
- Signal strength monitoring and tracking
- Internal announcement feature
- RSS feed from major news networks (optional)



FILTRATION AND USAGE CONTROL

- Two-stage filtration possible, onshore and offshore
- Application identification and categories classification (WhatsApp, etc.)
- Advanced usage reports to provide full visibility of the network traffic

INTEGRATED LTE FAILOVER

- Integrated LTE modem to reduce costs
- Seamless failover between LTE and satellite links

CYBER SECURITY

- Two levels of cyber security: at the gateway and remote
- Advanced intrusion detection and gateway antivirus on board
- Endpoint security with remote configuration
- Advanced Filters designed per WAN link (VSAT, L-Band, LTE) as required
- Full vulnerability monitoring from central shore dashboard



CREW/GUEST VOUCHERS

- Managed locally or via IEC Telecom customer support
- The captive portal intercepts users on the crew network and requests authentication
- Data distributed via in-built Wi-Fi router, enabling remote teams to stay connected via personal devices

WAN OPTIMISATION

- TCP compression and redundancy elimination
- TCP Acceleration
- Avoids unnecessary retransmissions
- Maximum line speed
- Link bonding and balancing

ADD-ONS

The functionality of OneGate can be further expanded with a wide range of IEC Telecom applications geared to operate in a low-bandwidth environment.

ONETeam
powered by DigiGone
Optimised application for videoconferencing

ONEAssist
powered by DigiGone
Remote maintenance delivered over hands-free handset

ONEMonitor
powered by DigiGone
Video surveillance software with advanced remote access

ONEHealth
powered by DigiGone
Portable digital telemedicine kit

OPTISOFT DASHBOARD
Virtual portal for network management and apps administration

ONEMailLite
Cost-effective email service for small vessels

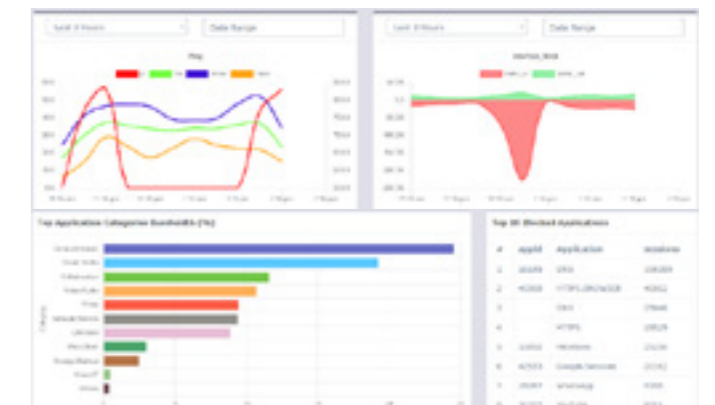
ONECover
Cutting-edge antivirus solution for remote networks

ONEMailPro
Email service for vessels with multiple users

ONEShare
Bi-directional file-transfer service for sea-shore data replication

OPTIVIEW: END-USER PORTAL

- Full visibility over WAN links
- Advanced filtration management
- History of bandwidth usage
- Usage details report
- Credit limit management
- Voucher monitoring
- Tracking & signal monitoring



OPTIVIEW

AN ONLINE DASHBOARD TO GIVE YOU FULL VISIBILITY

FULL VISIBILITY OF YOUR SATCOM LINKS

IEC Telecom is committed to providing its customers with full visibility of their satcom assets. Whether it is an L-Band SIM card or a VSAT link, you can get subscription information and monitor the current status of the link. Get even more from your OptiView dashboard when using IEC Telecom's OneGate box such as the current GPS location, the path of the vessel, and more value-added services.

HISTORY OF BANDWIDTH USAGE

Get a detailed bandwidth usage graph per network in order to get better insights about what is happening on-site or onboard the vessel. This will offer a depth of understanding about the total bandwidth usage as well as its distribution between corporate and welfare consumption.

ADVANCED FILTRATION MANAGEMENT

IEC Telecom OptiView provides fleet managers with

the possibility to control filters remotely and disable any specific profile with immediate effect. Based on the situation or consumption level, the IT/fleet manager can decide to apply a more restrictive profile at any given time or provide access to a larger number of categories to ease the restrictions.

USAGE DETAILS REPORT

IEC Telecom OptiView dashboard can provide complete consumption details based on websites visited and applications as well as the blocked requests on-site and onboard. This full visibility can help the IT/fleet manager to better understand crew needs and adjust the filtration levels.

CREDIT LIMIT MANAGEMENT

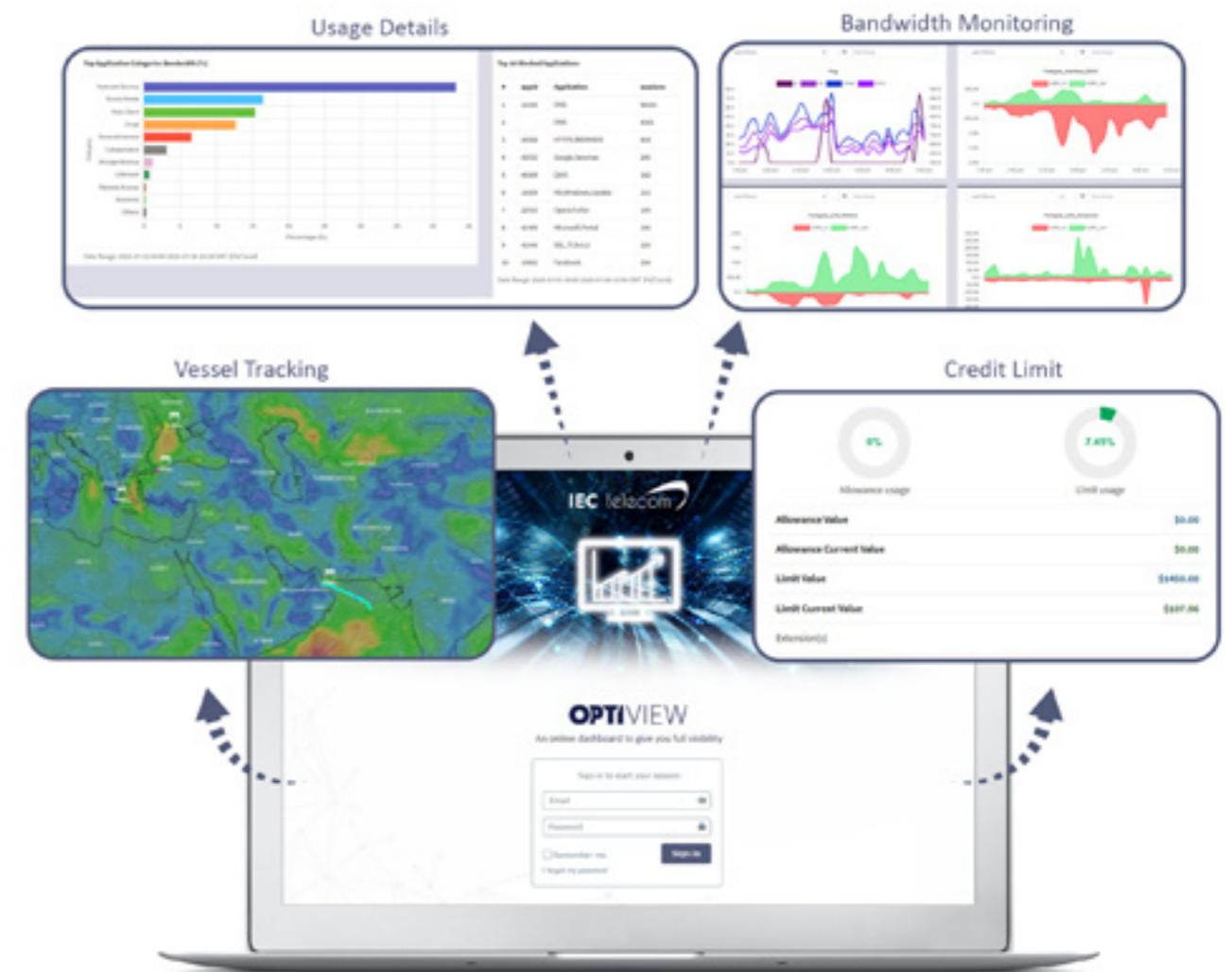
Whether it is for the L-Band terminal or VoIP service, IEC Telecom OptiView gives you the opportunity to monitor the usage over critical lines and set notifications for data consumption. You can even configure a specific threshold or credit limit that will result in the suspension of the line as soon as the limit is reached.

VOUCHERS MONITORING

IEC Telecom OptiView provides the IT/fleet manager with full visibility over the vouchers being used onboard. Once the voucher connects for the first time, all the statistics such as the validity, the data consumption, and remaining data bundle per user will be visible to the IT manager to enable proper forecasting of usage and vouchers provisioning.

WEATHER & SIGNAL MONITORING

IEC Telecom OptiView offers the possibility to access detailed weather conditions based on the location of the VSAT being used as well as the signal levels of the antennas. This will provide a better view and help forecast any future degradation of service. The signal level history is a very good tool to monitor past degradation and help schedule maintenance windows in order to enhance the end-user experience.



OPTICONNECT

DIGITALISATION FOR LOW BANDWIDTH ENVIRONMENTS

Digitalisation empowers remote communities and offers access to new communication technologies in areas with no/limited GSM coverage. Remote field teams are assured of connectivity even in low bandwidth environments and can easily access data services in a user-friendly virtual environment. Not only does this increase operational efficiency, digitalisation also optimises capital investment in hardware and saves the cost and complex logistics involved to send technicians to far-flung sites.

Powered by DigiGone, OptiConnect applications have been especially designed to operate in a low bandwidth environment. This incredible set of solutions is optimised for remote communities, including hands-free and multi-party videoconferencing, live technical assistance, large file exchanges, and advanced surveillance.

OptiConnect enables cost-effective connectivity no matter how remote the region may be.



Optimised application for videoconferencing



Video surveillance software with advanced remote access



Remote maintenance delivered over hands-free handset



Portable digital telemedicine kit



ONETeam

OneTeam users can simultaneously communicate with real-time voice, text, video, and data transfers to make critical business decisions and stay in touch with their friends and families. With live remote technical support, OneTeam delivers the most comprehensive communications solution for teams no matter where they operate. The app features include:

- Optimised videoconferencing and file exchanges, enabling remote teams to fix a problem/apply an update without the need to send a technician onsite
- Advanced visibility for experts from HQ and vendors to examine the issue first-hand via a real-time video stream
- Bandwidth control functionality



ONEMonitor

OneMonitor is a software-controlled CCTV system that operates on managed bandwidth communication solutions and is easily accessible on a laptop, smartphone or tablet. The app's consumption rate ranges from as low as 6Kbps up to 500Kbps.

The app features include:

- Ability to remotely monitor assets in real-time, simultaneously and securely
- AES 256-bit encrypted transmissions
- Enhanced operational efficiency for remote assets, field personnel, and revenue
- Remote access to recorded data to support forensic investigations and incident reviews
- Alarm triggers upon contact or video motion



ONEAssist

OneAssist enables virtual assistance to remote units and extends the complete knowledge resources of the organisation to the field in real-time. With a secure voice-controlled headset, field personnel can stay in touch with HQ, share snapshots of ongoing onsite issues, and receive live technical assistance from the shore expert even in low bandwidth and hard to reach environments. Specially designed for remote collaboration, OneAssist is perfect for IoT data visualisation, guided workflow, document navigation, and remote mentor video calling. The app features include:

- Video and audio teleconferences
- IM and file transfers
- Secure communications



ONEHealth

OneHealth is the definitive telemedicine care system that brings real-time decision support to the field. Whether medical staff operates onboard a vessel, on an onshore platform, or as part of a humanitarian mission in an area with limited to no GSM coverage, OneHealth provides reliable connectivity for critical communications over a user-friendly dashboard. The app features include:

- AES 256-bit encrypted transmissions
- Multi-party video, voice, text and file transfer
- Secondary private channel video collaboration
- Live medical device data streaming
- Remote control

OPTIACCESS

THE COMPLETE DATA COMPRESSION & EMAILING SOFTWARE

OptiACCESS is a data compression and emailing software that allows you to access the best web services anywhere: Emailing, Web Browsing, Weather, Social Media & Blogging. However, with OptiACCESS, you can take what you regularly do online a step further and make the internet work for you in a smart way. OptiACCESS provides you with a four-fold access advantage: First, you can easily connect to the internet only for the time you really require to send and receive data. Second, OptiACCESS enables web pages to load 3 to 5 times faster. Third, in case you get disconnected, OptiACCESS resumes the data transfer exactly where it was stopped. With integrated applications and compatibility with the equipment of all major satellite operators, OptiACCESS is the best choice for internet access.



MANAGE YOUR EMAILS

OptiACCESS is quick and easy to set up, allowing you access to your emails right away. Single email address per business unit (vessel/ camp/ remote office, etc.) with simple management, via any web enabled device,

including read, forward, reply, attachments and filing. With OptiACCESS, you can connect to the internet for only the time required to send and receive data. Moreover, in case you get disconnected, OptiACCESS resumes data transfer from the exact point of interruption.



CHOOSE WHAT YOU RECEIVE

OptiACCESS «BigMail» prompts you with the subject and email size so you can decide whether (and when) you want to download a large file from someone. Moreover, OptiACCESS helps you to manage your mail flow with the ability to whitelist or blacklist certain email addresses. Our systems come with multiple virus scanners and spam filters to provide safe and relevant mails to you while ensuring compliance with data protection legislations.

AN OPTIMAL COMPRESSION

OPTIACCESS COMPRESSES UP TO 99% OF AN IMAGE SIZE WITHOUT QUALITY LOSS

SAVE UP TO 95% ON YOUR BILLS

OPTIACCESS ONLY GENERATES AN AVERAGE OF 5% OF THE DATA CREATED BY A STANDARD EMAILING SOFTWARE



STAY CONNECTED EVERYWHERE

OptiACCESS makes web browsing easy with XWeb (optional). This web portal blocks ads, compresses texts and images, and deletes all wallpapers (too data consuming).

Browse web pages that load 3 to 5 times faster! Share your experiences on social media and Sailblog (optional) directly with OptiACCESS. A shortcut allows you to set up your accounts and post compressed images and texts via email.



LEVEL UP WITH OPTIMIZER

For your L-band connections, improve OptiACCESS performance with the Optimizer.

Easily connect your devices to the Optimizer (computers, smartphones, tablets, etc.) using WiFi or cellular data (3G/4G/LTE). The Optimizer works with OptiACCESS to ease access to your emails, web, weather files, social media platforms, and even automatically sends your GPS position to be geolocated.

A powerful firewall blocks all undesired connections to avoid unexpected data consumption, leaving you the ability to configure your network's access to your preferred devices.



SECURITY

Malware Detection, Virus Scans, and Spam Filters
OptiAccess servers scan every message for viruses and SPAM, blocking them before they enter your satellite communications system to save airtime and keep your machines clean. OptiAccess also has full DES/PGP encryption for optimum security.



COMPATIBILITY

Compatible with:

- Windows
- iOS
- Android

Works with equipment of all major satellite operators:

- Inmarsat
- GlobalStar
- Iridium®
- Telenor
- Thuraya



OPTISIM

THE COMPLETE DATA COMPRESSION & EMAILING SOFTWARE

OptiSIM is a web-based solution which provides, via a secured (SSL) access, the ability for IEC Telecom customers to manage and monitor all their satellite lines (SIM cards, VSAT links or devices), call details and invoices, enabling an extensive follow-up of prepaid and postpaid accounts.

PROVISIONING

ACCOUNT MANAGEMENT & FOLLOW-UP

BILLING & INVOICING



UNIQUE TOOL TO MANAGE ALL YOUR PROVISIONING NEEDS IN REAL-TIME

OptiSIM allows any customer, once identified, to access its satellite-based lines and place orders to:

- Handle the SIM card or line activation
- Add credit to the prepaid lines
- Manage postpaid subscriptions (change plan: upgrade or downgrade, deactivation, suspension.)

All customer orders are stored and executed within the predefined SLA.



EXTENSIVE FOLLOW-UP OF YOUR TRAFFIC AND ACTIVITY

OptiSIM has been designed to provide a complete overview of telecommunications activities on the deployed fleet, including information such as:

- Calls/ data session, date and location for all devices
- Volume usage (voice/data usage in MB, minutes or USD)
- Perform specific requests on traffic report
- Rename and edit account devices (SIM cards or lines) to make invoicing clearer when customers manage multiple accounts or lines
- Create consumption alerts and receive notifications when the threshold is exceeded (in MB, minutes or USD)

Example: create a low balance or expiration alert and receive a notification when a SIM card needs to be recharged. For postpaid, set up a high usage alert.

- Follow-up specific fleets (eg. SCAP).



EASY BILLING AND INVOICING MANAGEMENT

OptiSIM collates and aggregates all call details and automatically stores and delivers monthly invoices in PDF and/or Excel formats. For billing purposes, customers can use OptiSIM to:

- Manage their invoice currency (€, USD, AED, SGD, NOK, ZKT, SEK, DKK) – Multi-currency tool
- Consult and export past invoices when needed (unlimited invoices history)
- Consult all SIM details for all usage types (ahead of invoice creation)



EXTENDED ACTIVITY REPORTING TO ADAPT/ ADJUST YOUR OPTIONS

OptiSIM enables users to make specific requests to the database. These requests can be based on various criteria such as:

- Date
- Network
- Call type (voice or data)

Therefore, customers can get a complete snapshot of all their SIM cards or lines activity for a specific period of time (per day, month or year).

EASY & EFFICIENT ACCOUNT MANAGEMENT TOOL:

access your data 24/7 wherever you are.

TRAFFIC MONITORING:

complete logs details for both prepaid and postpaid accounts.

USAGE & REPORTING:

access and download account and billing history.

PREPAID ACCOUNT:

order, activate and recharge. check account balances and call details.

CONSUMPTION LIMITS & ALERTS:

set specific limits for a device(s) or groups of postpaid SIM cards and receive email notifications when the limit is reached.



GLOBAL 24/7 TECHNICAL SUPPORT

A DEDICATED TEAM TO ASSIST YOU ANYTIME

5 DEDICATED CHANNELS OF SUPPORT

IEC Telecom is committed to providing customers not only with voice and data satellite connectivity, but also with tailored services that ensure optimum use and control over their communications.

Our support team is dedicated to offering the best possible customer service that ensures the highest satisfaction levels.

- TECHNICAL SUPPORT
- EQUIPMENT QUERIES
- AIRTIME QUERIES
- ACTIVATION/DE-ACTIVATION/ SUSPENSION/ BARRING REQUESTS
- PLANNED MAINTENANCE QUERIES
- UNPLANNED OUTAGE QUERIES

Our 24/7 support team can assist you in different areas across the globe in many languages.

With five channels of technical support, you're guaranteed bespoke customer service to best suit your business needs.



EMAIL SUPPORT

STANDARD EMAIL SUPPORT – support-global@iec-telecom.com

Available from 9am to 6pm (CET time), Monday to Friday.

When you send an email to the above address, a ticket is automatically created and updated.

Your Account Manager is automatically added to the request when you write from your corporate email address.

PREMIUM EMAIL SUPPORT – upon request and accreditation

A new email raises a ticket and updates are added to it automatically when you write in from your corporate email address.

Automatic reminders are also generated. Notifications are sent to all the involved parties as per the SLA contract.



GLOBAL 24/7 HOTLINE

Upon emergency and customer accreditation, you can call your Account Manager to find out more about this service.

Middle East: +971 (0)4 55 86 497
Europe: +33 (0) 1 70363232



IEC WHATSAPP BUSINESS

No matter where you do business, you can request technical advice or solve signal problems via the interactive chat. This channel is a useful and cost-effective way to get qualified help regardless of your deployed condition or location.

WhatsApp Number: +971 50 242 42 38



ONLINE TICKETING

You can access this channel via the Technical Support page on the IEC Telecom website or directly at ticketing.iec-telecom.com.

TRY OUT OUR TICKETING

- **Standard SLA***: Customer tickets are processed between 9am to 6pm (CET time), Monday to Friday.
- **Premium SLA**: Tickets are processed 24/7 for all customers under this specific contract - ask for it!

*Service Level Agreement



DOWNLOAD CENTER

You can access a wide library of resources, including installation manuals, user guides, software updates, and more. All resources are conveniently stored at an online Download Center, accessible via the IEC Telecom website.





**IEC TELECOM
HUMANITARIAN SOLUTIONS**

#satelliteitup

#satelliteitup

#satelliteitup

#satelliteitup



INMARSAT LX (LAND EXPRESS)

A SECURE AND FLEXIBLE WORLDWIDE NETWORK FOR CRITICAL COMMUNICATIONS

Inmarsat Land Xpress is a new generation global network of high capacity satellites. It operates in the Ka-band and is backed by the L-band to provide universal, real-time, and secure coverage. The Land Xpress provides terminals that work under a single, global IP address and offers universal coverage under a single subscription, eliminating the need to manage multiple regional service providers while keeping your data secure, accessible, and portable. Now, you can plan for mission critical operations, surveillance, and special operations, anywhere, anytime.

BENEFITS

- Significant cost savings for services delivered via Inmarsat SAS sites
- Works on a broad portfolio of terminals in mobile, portable, and fixed formats
- Dual carrier MPLS backbone and dual SAS configuration for clear and reliable communication
- High-speed file transfers and broadband internet access globally
- Supports video surveillance and live full-motion video services
- Easy to install and operate

WHY INMARSAT LAND XPRESS?

Coverage: No matter where your organisation is located, today or in the future, Land Xpress provides you with assured connectivity.

Reliability: Your mission critical communications are delivered over a seamless, efficient, and dependable network with Land Xpress.

Efficiency: You can take advantage of a single global network with one set of training, support, and maintenance standards instead of managing multiple contracts with regional satellite service suppliers.

Compact: Each terminal you install comes with its own single, global IP address.

They're discreet, on-site and available in portable, mobile, or fixed-forms, and can be transported easily.

CASE IN POINT

You can use Inmarsat Land Xpress for a variety of functions, including:

- Video teleconferences
- Remote video streaming
- Video surveillance
- Secure file transfers
- Remote office applications
- Distance learning
- Content distribution
- Event planning

YAHCLICK WI-FI

SATELLITE BROADBAND SERVICE OFFERING RELIABLE, COST-EFFECTIVE, AND HIGH-PERFORMANCE INTERNET CONNECTIVITY



Delivered through the latest generation of High Throughput Satellites (HTS), the YahClick service uses the efficiencies provided by the reusable Ka-band satellite frequency and is powered by multi-spot beam technology to make satellite broadband affordable and dependable in areas where there is limited to no terrestrial infrastructure.

CLOSING THE DIGITAL DIVIDE

YahClick Wi-Fi provides communities with direct access to critical communications via the internet. It can be set up and utilised to provide communities access to information and public announcements.

DEVELOPMENT PROJECTS

YahClick Wi-Fi provides the means for connectivity to provide basic infrastructure in rural areas, such as education, healthcare and general governmental support.

HUMANITARIAN OPERATIONS

Internet access through YahClick Wi-Fi enhances the efficiency and effectiveness of response teams, by enabling easier data collection and analysis in both ongoing support and emergency response.

EMERGENCY CONNECTIVITY

YahClick Wi-Fi ensures that crisis-affected communities have access to connectivity for emergency communications – from ordering urgent food supplies to submitting security reports.

FEATURES

- Extendable to a large area for different community requirements
- Wi-Fi zones can be activated and managed remotely
- Solar-powered, self-charging batteries
- Voucher Management System generates volume-based or time-based vouchers for users
- Local cloud preloads content for users to have access to customised content

BENEFITS

BASE TRANSMISSION STATION (BTS)

- Provides a Wi-Fi hotspot with a range of up to 15km
- VSAT equipment
- Provides satellite backhaul connectivity
- Solar panels with battery back-up
- Powered 24x7, independent of national or local grids

TECHNICAL FEATURES

- The BTS can be mounted on a standard aluminum tower (optimally 6-8 metres), or mounted on existing infrastructure
- The BTS transmits the Wi-Fi cloud with a radius of up to 500m at a 2.4GHz frequency, allowing users to connect through their handheld devices
- In larger areas, the solution connects up to 200 carrier-class Wi-Fi zones, both indoors and outdoors, up to 15km from the BTS at a 5GHz frequency. The Wi-Fi zones are then equipped with routers to create small Wi-Fi clouds of up to 500m at the 2.4GHz frequency



VOYAGER EDGE V

DUAL SATCOM/GSM SOLUTION FOR CONNECTED CARS



Bridging the digital divide with global satellite connectivity, Voyager Edge V is a hybrid satcom/GSM solution that empowers public services and social programmes in areas with limited or no GSM coverage. With a VSAT-like user experience and uninterrupted connectivity on-the-move, it ensures the continuity of government, humanitarian and business operations in remote areas.

THURAYA IP VOYAGER

- Thuraya IP Voyager is a reliable, high-quality and affordable vehicular satellite terminal designed for a wide range of mission-critical on-the-move operations in areas inadequately served by terrestrial networks
- The terminal enables users to collaborate reliably and efficiently with colleagues using video, data, and VoIP to achieve mission-critical tasks where failure is not an option

ONEGATE COMPACT

- Dual GSM/satcom mode with least cost routing
- TCP acceleration and compression for up to 2 Mbps user experience
- Digital dashboard for network management
- Hosting optimised apps (email service, videoconferencing, remote surveillance, and more)

- User-controlled with a flexible voucher system and advanced UTM security
- Compatible with a hands-free headset for remote maintenance, powered by DigiGone
- Lightweight, mobile, and compact

CONSUMPTION CONTROL

Non-critical usage can easily monopolise a link and weaken the security of the network.

Voyager Edge V supports filtration capabilities that enable HQ to restrict usage of dedicated links in order to ensure the availability of bandwidth for priority communications.

MOBILE UNITS

With GPS tracking of mobile units in real-time as well as a secured channel for confidential communications and data transfers, Voyager Edge V ensures the continuity of operations and safety of remote workers. A 24/7 dedicated

digital portal allows to remotely monitor consumption and control the network status.

TELEMEDICINE

With the increasing role of virtual healthcare delivery, Voyager Edge V equips field physicians in remote communities with counsel and resources that are otherwise unreachable. Telemedicine empowers government healthcare systems with a low-cost solution to extend medical coverage and brings high quality medical assistance to patients in the comfort of their own homes.

SOCIAL PROJECTS

With cost-effective connectivity for social initiatives, e-banking, and e-learning, Voyager Edge V connects government bodies, private institutions, and remote communities to extend access to all social groups. Besides social inclusion benefits, businesses can explore attractive niches for new investments and uplift the global economy while remaining competitive.

RDK

RAPID CONNECTIVITY FOR FIRST RESPONDERS



RDK (Rapid Deployment Kit) is a portable network management solution designed to support first responders with reliable connectivity as they initiate relief missions. RDK allows frontline workers to take full advantage of digitalisation, including videoconferencing, remote maintenance, and telemedicine for smooth communications in the most challenging areas.

CHARACTERISTICS

- 3in1 Antenna (GPS, LTE, Diversity)
- 2 x 98Wh/6,8Ah Battery
- Portable MSS terminal for data services
- OneGate Aid Compact
- Rugged case

KEY FEATURES

- TCP acceleration and compression up to 2 Mbps user experience
- Local dashboard to give mission staff full network visibility
- Hosting optimised apps (emails, videoconferencing, video surveillance, automated file transfer, etc.)
- Users control based on flexible voucher system and advanced UTM security
- Light-weight, mobile, and compact

EASY TO DEPLOY

The lightweight kit is portable with removable batteries, and as such, accepted in commercial flights. Conveniently packed in an exceptionally durable suitcase, the kit can resist harsh travel conditions and be deployed in no time, ensuring immediate coverage and support for end-to-end humanitarian services.

CORPORATE VS WELFARE

RDK helps to boost the morale of frontline workers by enabling internet access over a welfare network and ensures the cyber security of classified corporate files by keeping the corporate and welfare networks isolated.

SAVING COST

Understanding the need to keep communication budgets under control, RDK was developed accounting for cost

optimisation. It offers a seamless switch to 4G in areas with GSM coverage with least cost routing. Consumption control and network status can be monitored at all times via digital dashboards: full admin control over central management dashboard is available to the CIO/IT department at HQ and a local dashboard with limited access for the onsite operational chief.

FUTURE-READY

RDK is a future-ready solution, enabling upgrades and installation of virtual machines remotely without the need for onsite maintenance.



PRISM PTT+

ALL-IN-ONE COMMUNICATIONS NETWORK

For a unified communications network that encompasses radio (LMR/DMR), cellular (3G/LTE), and satellite, PRISM PTT+ is the perfect connectivity solution no matter where your operations take place. With no need to build expensive infrastructure and seamless network failover, this incredible communications platform keeps costs low and optimises business processes. Moreover, PRISM PTT+ ensures reduced lifecycle maintenance and equipment costs.

PRISM PTT+ enables you to track your assets in real-time, set priority PTT (Push-To-Talk) sessions, and ensures constant connections between frontline, dispatch, and inter-agency teams. First responders can use familiar equipment, creating time efficiency in public safety measures; utility teams are assured operational continuity as they carry out critical processes; and the transportation industry standard applications function on low-cost, high-performance access for maximum efficiency.

PRISM PTT+ is powered by the high-end L-band Inmarsat network and supported by BGAN PTT+ flat rate plans. Having a long-standing relationship with Inmarsat, IEC Telecom ensures the best quality of service and provides a range of value-added services to support the requirements of your mission.

PRISM PTT+ operates over EXPLORER Mobile Gateway, EXPLORER BGAN Satellite Antenna, and PRISM Portal.

EXPLORER MOBILE GATEWAY

Integrate all in-vehicle devices and connections into one powerful communications network. Easily convert existing radio networks into a future-ready radio over IP solution and seamlessly route all voice and data services on-the-move.

new communications infrastructure. Keep operational costs low with BGAN PTT+ flat rate plans even over a highly adaptable and automated communications network.

Strengthen connectivity channels with a robust, rugged, and integrated satellite modem and antenna with no moving parts. Ensure portability over the smallest on-the-move terminal for Inmarsat BGAN services.

EXPLORER BGAN SATELLITE ANTENNA

Expand connectivity over Inmarsat's global L-band satellite network without building

PRISM PORTAL

Manage talk groups, record voice messages, and set up advanced routing for critical applications over a 256-bit AES encrypted

platform. Access pre-configured radio interfaces for existing LMR/DMR radio networks.

Create priority PTT sessions and display travel routes based on geofencing functionalities with the benefits of flat rate pricing. Control user device features and permissions with this multi-faceted management portal.

IRIDIUM EXTREME® PTT SOLUTION

PUSH-TO-TALK ALLOWS YOU TO PRESET CONVERSATIONS WITH A GROUP OF PTT USERS LOCATED IN A PRE-DEFINED AREA



Using the Iridium Extreme® PTT Command Center, the administrator can quickly and easily define coverage areas and user talkgroups as well as make changes within seconds.

The Iridium Extreme® PTT service is based on various subscription plans, all based on the size of coverage for PTT service (km²).

Geographic definition of each talkgroup: with a Google Maps interface, talkgroups are defined by a maximum size of 2,250,000 km². One to 10 different geographic areas may be included in a single talkgroup by creating circles or rectangles over the area on the map.

Subscriber equipment: equipment can be assigned to talkgroups through a drag and drop. Up to 15 talkgroups may be assigned to each subscriber equipment.

KEY FEATURES

- All service coordination is performed using a single interface
- Talkgroup areas are changed in seconds
- Devices can be suspended or blacklisted easily
- End user organisations may control their own service and device perimeters
- Google Maps utilizes in geo displays, easy drag and drop controls

IRIDIUM EXTREME® PTT CAPABILITIES

- Push-To-Talk allows you to set conversation with a group of PTT users located in a pre-defined area.
- GLOBAL: Works pole-to-pole where you need it
- MOBILE: Fully integrated for on-the-move, handheld use
- SIMPLE: Automatic programming and registration with easy-to-use menu navigation
- ADAPTABLE: Use on-foot, in-vehicle, or in-building with available accessories

- SECURE: Push-to-Talk communications are kept private with AES 256 encryption
- FLEXIBLE: Unlimited number of users in the talkgroups with affordable unlimited airtime plans

ONE UNIQUE COMMAND CENTER

- Using the Iridium Extreme® PTT Command Center, the administrator can quickly and easily define coverage areas and user talkgroups as well as make changes within seconds.

IEC TELECOM
PRODUCTS | LEO



STARLINK HIGH PERFORMANCE (FIXED)



Powered by the world's largest constellation of low-earth orbit (LEO) satellites, Starlink delivers reliable high-speed network coverage of up to 220 Mbps. Suited for all disruptive environmental conditions, Starlink supports activities that consume high amounts of data such as corporate applications, streaming, and video calls without losing its high-speed functionality. Its simplified design and associated Starlink Kit (WiFi router, cables, and base) ensure efficient installation within minutes. Moreover, there is no long-term commitment to Starlink's service. Customers can avail month-to-month or long-term plans, and even put the service on pause to meet their evolving connectivity needs. Starlink is ideal for the corporate set-up as well as remote use. The lightweight terminals are perfectly compatible for comms-on-the-pause (COTP) and comms-on-the-move (COTM).

USE CASES

FIRST RESPONDERS: Ensure enhanced mobility and shorter reaction time for rescue missions. Support the smooth operation of corporate apps with low-latency technology, enabling a fast response when it is needed the most.

LONG-TERM DEPLOYMENT: Quickly set up high-speed broadband connectivity for humanitarian camps and employee compounds. Access a reliable link over a permanent installation for clear video calls, VPNs, and other high data rate activities.

E-MEDICINE: Access professional medical support from all over the world. Connect your community to qualitative healthcare, starting with online consultations and all way to video streaming from the ECU and OR.

E-LEARNING: Empower educational institutions and create knowledge-sharing hubs with access to online courses, e-libraries, and educational software. Ensure talent attraction and retention, enabling continuous learning onsite.

BUSINESS CONTINUITY: Upgrade or downgrade the subscription in accordance with evolving operational needs via month-to-month service plans. Empower missions to run operations on par with HQ with fast-speed access to corporate applications.

FEATURES

- LEO satellite connectivity
- High-speed connectivity
- Low-latency technology
- Fixed and portable usage
- Motorised & Self-orienting
- Simple installation

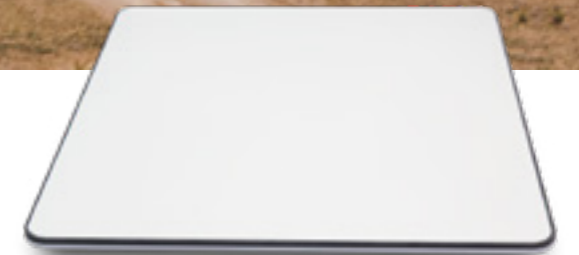
SPECIFICATIONS

- Antenna Type
 - Electronic phased array
 - Motorised self-orienting

- Weight
 - Antenna: 6.9 kg (without cable); 9.4 kg (with cable)
 - Router: 1 kg
- Dimensions
 - Antenna: 57.5 cm (height); 51.1 cm (width)
 - Base: 12.2 cm (height); 56 cm (width)
 - Router: 25.4 cm (height); 18 cm (width); 6.5 cm (depth)
- Operating Temperature: -30°C to 50°C
- Environmental Rating: IP56
- Cables

- Starlink: 25m
- Ethernet: 5m
- Router: 2m
- AC Power Supply: 1.8m
- AC Router: 1.8m
- Radio: Dual Band – 3x3 MIMO
- Security: WPA2
- WiFi: IEEE 802.11 a/b/g/n/ac
- Field of View: 140°
- Power: 110 – 150 W
- Wall mount

STARLINK FLAT HIGH PERFORMANCE (VEHICULAR)



Powered by the world's largest constellation of low-earth orbit (LEO) satellites, Starlink delivers high-speed network coverage of up to 220 Mbps for comms-on-the-move (COTM) use. Its streamlined and rugged antenna enables total visibility and efficient management over a large fleet of vehicles in all environmental conditions. Starlink supports activities that consume high amounts of data such as streaming, remote monitoring, and video calls without losing its high-speed functionality. The antenna can be installed and be ready for use within minutes. Moreover, there is no long-term commitment to Starlink's service. Customers can avail month-to-month plans, and even put the service on pause to meet their evolving connectivity needs. Starlink is fully flexible and ideal for vehicular use.

USE CASES

HUMANITARIAN: Empower humanitarian field missions with high-speed connectivity within minutes anywhere on the planet. Enable a reliable link for efficient camp operations.

FIRST RESPONDERS: Enable a shorter reaction time for first responders with low-latency technology. Ensure enhanced mobility with a sleek comms-on-the-move (COTM) solution for rapidly evolving circumstances.

PUBLIC SERVICES (DELIVERED REMOTELY): Expand the scope of e-government operations with dependable low-latency connectivity. Bridge the digital divide and enable remote communities with access to public services on par with urban areas.

TRAVEL: Access high-performance connectivity for clear video calls, VPNs, streaming, and more. Benefit from a flexible month-to-month service plan to meet specific travel requirements.

FEATURES

- LEO satellite connectivity
- High-speed connectivity
- Low-latency technology
- Connectivity on-the-go
- Compact antenna
- Simple installation

SPECIFICATIONS

- Antenna Type
 - Electronic phased array
 - Fixed orientation

- Weight
 - Antenna: 5.9 kg (without cable); 6.7 kg (with cable)
 - Router: 1 kg
- Dimensions
 - Antenna: 57.5 cm (height); 51.1 cm (width); 4.1 cm (depth)
 - Base: 40 cm (length); 30 cm (width)
 - Router: 25.4 cm (height); 18 cm (width); 6.5 cm (depth)
- Operating Temperature: -30°C to 50°C
- Environmental Rating: IP56
- Cables
 - Starlink: 8m

- Ethernet: 5m
- Router: 2m
- AC Power Supply: 1.8m
- AC Router: 1.8m
- Radio: Dual Band – 3x3 MIMO
- Security: WPA2
- WiFi: IEEE 802.11 ac
- Field of View: 140°
- Power
 - 110-240 V
 - 49 V = 1,9 A (x4) LPS
- Wedged wall mount

#satelliteitup #satelliteitup #
#S

IEC TELECOM
PRODUCTS | VSAT





INMARSAT EXPLORER 8120

BY COBHAM

**ADVANCED AUTO-ACQUIRE DRIVE-AWAY
VSAT ANTENNA**



With dynamic pointing correction technology, Explorer 8120 is an advanced auto-acquire drive-away VSAT antenna system for the Ku-band. It delivers satellite acquisition in less than four minutes and maintains continuous connectivity even in the toughest terrains. The built-in WiFi and web-based user interface enable easy configuration on smartphones and laptops. This state-of-the-art comms-on-the-move (COTM) antenna is available in an 8W, 20W and no BUC option. Explorer 8120 is perfect for enterprise, oil & gas, healthcare, NGOs, and public safety operations.

FEATURES

- Advanced dynamic pointing correction technology
- 1.2m carbon fiber reflector
- Comms-on-the-move (COTM) antenna
- Precision polarization drive
- Harmonic drive gear systems
- Built-in WiFi interface

- Dimensions
 - Length: 177 cm
 - Stowed: 120 x 36 cm
 - Antenna Control Unit: 48 x 33 x 4.4 cm
- Operational temperature (°C): -33°C to +55°C
- Humidity: 0 to 100%, condensing
- IP Rating
 - Antenna: IP55
 - Antenna Control Unit: IP30

- Azimuth: +/- 195°
- Polarization: +/- 95°
- Satellite Inclination: +/- 15°
- Stowing & Deploying: 9° per second
- Acquisition Time: <4 minutes from cold start
- 10m Cable Harness
- 1.2m single piece carbon fiber RTM Reflector

CHARACTERISTICS

- Weight
 - With 8W BUC: 66.5 kg
 - With no BUC: 63.6 kg
 - Antenna Control Unit: 4.5 kg
- Power Consumption: 360 W (active motor); 180 W (idle motor)
- Frequency: 13.75 – 14.5 GHz
- Antenna Gain: 43.3 – 44 dBi (+/- 0.2)
- Standard BUC Options: 8 W, 20 W

PARADIGM HORNET 100

**A RUGGED PORTABLE SATCOM TERMINAL
FOR EXTREME ENVIRONMENTS**



Rugged and versatile, Paradigm Hornet 100 delivers reliable satcom connectivity in any environment. It easily fits into a single IATA-compliant case and can be set up in less than 90 seconds, making it perfect for use in critical situations. Powered by PIM® (Paradigm Interface Module), the terminal starts transmitting at the press of a button over a simple user interface and offers quad-band capability and field-changeable modules. Built to MIL-STD-810G specifications, the terminal can be integrated into an existing terminal fleet, delivering high-throughput at low cost. Paradigm Hornet 100 is ideal for NGOs, military, scientific, and commercial operations.

USE CASES

NGOS: Empower rescue and disaster zone operations with portable terminal that can be carried in a single IATA-compliant case. Coordinate logistics, field communications, safety processes, and more.

MILITARY: Quickly deploy a versatile and secure communications system with an intelligent interface. Benefit from reliable high-throughput global coverage despite limited infrastructure.

ENTERPRISE: Enable efficient work processes across a broad temperature range as well as any rough environment. Support commercial operations with real-time data transfers over a multi-band satcom terminal.

FEATURES

- Global network coverage
- Powered by PIM® (an intelligent controller)
- Rapid deployment in critical situations
- Terminal-agnostic
- IATA compliant case
- Rugged, versatile, and lightweight

SPECIFICATIONS

- Weight: 19.1 kg
- Dimensions: 100 cm
- Operational temperature (°C): -25°C to +55°C
- IP Rating: IP67
- Power: 18 – 36 V DC
- Quad-Band Capability: Mil-Ka, Ka, Ku, X

- EIRP
- G/T
- MIL-STD-810G

STARWIN FL60P

FULLY AUTOMATED FLAT PANEL SATELLITE TERMINAL

A new generation of fully automated flat panel satellite terminals, StarWin FL60P is a unique system that is easy to deploy within minutes. It offers users of satellite dish systems a revolutionary alternative to parabolic antennas. The satellite router, WiFi, RF units, power supply, and cutting-edge antenna system are completely integrated into a compact device. Powered by Intelsat FlexMove, a global multi-layered High Throughput Satellite (HTS) network, it is 20x faster than L-Band systems. Moreover, it enables a wide range of applications over its pre-configured FlexMove service, including data, voice, and video transfers. StarWin FL60P is the perfect affordable comms-on-the-pause terminal in areas without terrestrial networks.

FEATURES

- Fully integrated with modem, WiFi, antenna, and power supply
- Intuitive display for quick satellite network acquisition
- High gain efficiency
- Cost-effective data, voice & video transfers
- Comms on the pause (COTP)
- Compact and ultra-lightweight

SPECIFICATIONS

- Model no: FL60P-E
- Antenna Type:
 - Slotted waveguide array antenna
- Equivalent to parabolic antenna size: 0.6m
- Frequency range:
 - Tx: 13.75~14.50GHz
 - Rx: 10.95~12.75GHz
- Polarization: Linear
- Receiving gain: $\geq 35\text{dBi}$

- Transmitting gain: $\geq 36\text{dBi}$
- G/T: 13dB/K
- First sidelobe: $\geq 15\text{dB}$
- Satellite acquisition:
 - Automatically pointing to satellite, level error $< 0.2\text{dB}$
- Azimuth range
 - Unlimited, fine tune $\pm 80^\circ$
- Elevation range: $7^\circ \sim 90^\circ$
- Polarisation: $\pm 110^\circ$
- Power supply
 - AC 90-264V (DC 24V $\pm 5\%$ optional)
- Able to operate OVER both AC and DC power via integrated rechargeable battery
- External battery:
 - 187.2WH (Working time for external battery pack: Up to 2 hours)
- Max power consumption:
 - 120W (with 6W BUC, searching process)
 - 85W (access network)

- Terminal dimensions (not including cables and backpack)
 - (LxWxH): 680x650x240 mm
- Total terminal weight (not including cables and backpack)
 - 18 kg (Max)
- Wind (Operational): 14m/s (50km/h)
- Operational temperature: -25°C to $+50^\circ\text{C}$
- Ingress protection: IP-66
- Humidity: 0 ~ 95%
- Satellite modem: iDirect IQ 200 modem
- Typical buc: 6W
- Typical LNB:
 - PLL LNB 30K for TDMA systems
 - PLL LNB 5K for SCPC systems
- Wireless router supported protocols
 - IEEE 802.11b/g/n at 2.4GHz
- Lan port (RJ45): Gigabit Ethernet
- Bluetooth device: v.2.0
- Gnss device supports:
 - GPS/GLONASS/BeiDou-2/Galileo



STARWIN FL30P

ULTRA-LIGHT INTEGRATED SATELLITE TERMINAL FOR REMOTE AREAS

Powered by Intelsat FlexMove, a global multi-layered High Throughput Satellite (HTS) network, StarWin FL30P delivers high quality broadband connectivity over a fully integrated compact satellite terminal. It does not require assembly and its intuitive user interface makes it extremely user-friendly. This ultra-light terminal is 20x faster than L-Band systems and can connect to a satellite network in just three minutes. Moreover, it enables a wide range of applications over its pre-configured FlexMove service, including data, voice, and video transfers. StarWin FL30P is the perfect affordable comms-on-the-pause terminal even in the most remote locations.

FEATURES

- Fully integrated with modem, WiFi, antenna, and power supply
- Satellite lock in just three minutes
- 20x faster than L-Band systems
- Cost-effective data, voice & video transfers
- Comms on the pause (COTP)
- Ultra-lightweight terminal

SPECIFICATIONS

- Model no: FL30P-M
- Antenna Type:
 - Horn waveguide array antenna
- Equivalent to parabolic antenna size: 0.3m
- Frequency range:
 - Tx: 13.75~14.50GHz
 - Rx: 10.70~12.75GHz

- Polarization: Dual Linear
- Receiving gain: $\geq 31.2\text{dBi}$
- Transmitting gain: $\geq 32.5\text{dBi}$
- G/T: 10dB/K
- First sidelobe: $\leq -14\text{dB}$
- Satellite acquisition
 - Manually pointing to satellite, level error $< 0.2^\circ$
- Azimuth range
 - Unlimited, fine tune $\pm 5^\circ$
- Elevation range: $10^\circ \sim 90^\circ$ continues, fine tuning $\pm 5^\circ$
- Polarisation: $\pm 70^\circ$
- Power supply:
 - DC 10~24V $\pm 5\%$ (with AC adapter)
- External battery:
 - 187.2WH (Working time for external battery pack: Up to 2 hours)

- Max power consumption
 - 150W
- Dimensions:
 - (LxWxH): 385x350x85 mm (stowing)
- Weight:
 - 6.5 Kg (typical configuration)
- Operational wind: 17m/s (61.2km/h)
- Operational temperature: $-25^\circ\text{C} \sim +50^\circ\text{C}$
- Ingress protection: IP66
- Humidity: 0 ~ 95%
- Satellite modem: iDirect IQ 200 modem
- Typical buc: 16W
- Other:
 - Built-in WiFi
 - Bluetooth
 - LAN port (RJ45 10/100/1000)





KYMETA™ u8



AERODYNAMIC ANTENNA FOR ON-THE-GO CONNECTIVITY

Designed with Kymeta's software-defined technology, u8 is an aerodynamic antenna that delivers seamless satellite and cellular connectivity to vehicles. Kymeta u8 has a simple power-on start-up, auto-acquisition, and over-the-air software updates. Powered by Intelsat FlexMove, a global multi-layered High Throughput Satellite (HTS) network, it is 10x faster than L-Band systems and offers access to cloud-enabled solutions for terminal metrics as well as network management tools. This revolutionary antenna has been specially designed to operate at high speeds over a wide range of mobility environments, simplifying vehicle integration. Easy to install, it also features electronic steering for low maintenance. Kymeta u8 is the perfect portable terminal for on-the-go connectivity.

FEATURES

- Always-on connectivity with multi-WAN satellite and LTE support
- Cloud-enabled solutions
- 10x faster than L-Band systems
- Comms on the move (COTM)
- Highly portable, robust, and lightweight
- LEO-upgradeable

SPECIFICATIONS

- Antenna Type
 - Kymeta u8 GEO Terminal with integrated LTE capability
- Dimensions:
 - W 89.5 cm x D 89.5 cm x H 14 cm
- Total weight:
 - 34 kg (75 lb.) (includes modem, hybrid card)

- Frequencies:
 - TX 13.75 - 14.5 GHz
 - RX 10.7 - 12.75 GHz
- Polarisation:
 - Vertical and horizontal, software defined (circular with software upgrade)
- EIRP: Up to 46.5 dBW with 20 W BUC
- Scan angles:
 - Az 360°, El +15° to +90°
- G/T Broadside: 9.5 dB/K to 12 dB/K
- Power Consumption (with Integrated Modem):
 - 130 W (typical)
 - 250 W (peak)**
- DC input power: 12 VDC to 36 VDC max
- Network interface: Ethernet, WiFi
- RF cables: N-type connectors

- Certifications in progress:
 - CE, UL, RoHS, FCC
- Operational temperature:
 - -40° C to +55° C (ambient)
 - -40° C to +70° C (with solar load)
- Available configuration:
 - Integrated antenna control unit and power supply
 - iQ 200 modem and multi-WAN device with either global LTE or LTE Band 14 configuration
 - RF chain with 20 W low-profile BUC
 - Shroud
- Available accessories:
 - Vehicle mount kit
 - Vehicle power kit
 - AC-to-DC power kit

SATCUBE Ku



ALL-IN-ONE SATELLITE CONNECTIVITY TERMINAL

With high-speed data communications up to 20 Mbps over High Throughput Satellites (HTS), Satcube Ku terminal is the perfect connectivity device for a wide range of corporate and government applications, streaming video, social media, and VOIP access. Its simple, sleek, and lightweight flat antenna panel design makes it highly portable. Satcube Ku takes less than one minute to deploy and connect, and its heat pipe cooling system and user interfaces are neatly built-in to further enhance user experience anywhere on the planet. Powered by swappable batteries for up to three hours of transmitting time that complements external power consumption, Satcube Ku empowers remote field missions, humanitarian teams, public safety operations, broadcasting services, and much more.

FEATURES

- High Throughput Satellites (HTS) Technology
- Flat Antenna Panel Design
- Less than one minute to deploy
- Built-in heat pipe cooling system
- Highly portable
- Battery-powered

SPECIFICATIONS

- Weight: 8 kg
- Dimensions: 407 x 300 x 55 mm
- Operational temperature (°C): -20°C to +50°C
- IP Rating: IP65
- DC Input: 24 V DC
- AC/DC Input Range: 100 – 240 V AC, 47 – 63 Hz, 150 W
- Power Consumption: 130 W
- IP Data: 4 Mbps (full duplex); Up to 20 Mbps (HTS satellites)

- Battery: 3 hours (transmit time)
- Frequency
 - Tx: 13.75 – 14.50 GHz
 - Rx: 10.95 – 12.75 GHz
- EIRP: Typical 46 dBW
- G/T: 9 dB/K
- Satellite Modem: iDirect IQ 200, Newtec 2510 & UHP 210
- 2x LAN
- 1x USB Host
- WLAN Access Point (IEEE 802.11 b/g)
- High Contrast Display



#satelliteitup #satelliteitup #

#satelliteitup

#satelliteitup #satellit

IEC TELECOM
PRODUCTS | MODEMS

satelliteitup

teitup satelliteitup #satelliteitup

cup #satellit

teitup

IRIDIUM GO! EXEC™



PORTABLE SATELLITE-BASED HOTSPOT FOR SMART DEVICES

Powered by Iridium Certus® 100, Iridium GO! exec™ delivers portable wireless access for voice and data communications anywhere on the planet. Battery-powered, compact, and lightweight, this state-of-the-art device dramatically extends the capabilities of any smartphone, laptop or tablet by creating a satellite-backed Wi-Fi hotspot for social media, light web browsing apps, email, and more. Iridium GO! exec™ offers multi-user access for up to two voice calls or multiple data connections simultaneously. Simply flip up the integrated omni-directional antenna to connect quickly and automatically to the global satellite network. Moreover, users can register for 24x7 SOS monitoring from IERCC, a third-party emergency response coordination center. Iridium GO! exec™ is ideal for NGOs, scientific research missions, travel & leisure, and remote enterprises.

USE CASES

NGOS & HUMANITARIAN MISSIONS: Access easy mobile payment and fund transfer apps as well as two HD quality voice lines for efficient coordination of administrative functions. Quickly connect to the Iridium satellite network with the integrated antenna.

SCIENTIFIC RESEARCH: Share photos, videos, and data over a complete range of global communication mediums with built-in WiFi, speakerphone, and multi-user access capabilities. Operate from a fixed or mobile location with omni-directional connectivity.

REMOTE ENTERPRISES: Enable session controls and pre-configured filtering options to manage airtime usage efficiently. Benefit from multi-user connections within a range of up to 30m via the dedicated Iridium Go! exec™ app for phone calls and web access with affordable pricing plans.

FEATURES

- Portable wireless access
- Omni-directional satellite network connectivity
- Multi-user access
- Colour touchscreen
- Battery-powered device
- Compact and lightweight

CHARACTERISTICS

- Weight: 1.2 kg
- Dimensions: 203 x 203 x 25 mm
- Operational Temperature: -20°C to +50°C
- Operational Range: Up to 30 m
- Ingress Protection: IP65
- Battery Life
 - Talk Time: Up to 6 hours
 - Standby Time: Up to 24 hours
- IP Data: Up to 22 Kbps (uplink); Up to 88 Kbps (downlink)
- 2x HD Quality Voice Lines

- Colour Touchscreen
- Iridium Certus® 100
- Iridium Go! exec™ app
- Built-in Speakerphone & Microphone
- Built-in WiFi
- Dual USB-C, Ethernet, External Antenna/ GPS Ports
- Standard Apps
- Web Filtering
- MIL-STD-810H
- Certifications: CE, FCC, ISED, RCM, UKCA
- 24x7 SOS Monitoring

IRIDIUM GO!®



YOUR SMARTPHONE CONNECTED ANYTIME ANYWHERE!

Iridium GO!® creates the first ever reliable global connection for voice and data communications on your smartphone or up to 5 mobile devices.

No roaming charges. Just connect whenever you need, with the device you rely on everyday.

Iridium GO!® dramatically extends the capabilities of any smartphone, laptop or tablet by creating a satellite-backed WiFi hotspot anywhere on the planet.

Simply flip up the integrated antenna and the battery-powered unit connects quickly and automatically to the Iridium® LEO (Low Earth Orbit) satellite constellation.

FEATURES

- Connect through Iridium® Apps available for iPhone and Android smartphones
- Initiate voice calls
- Send Twitter posts
- Set up WiFi data calls
- Activate Emergency SOS
- Draft and view emails offline
- Configure email size to reduce connection time
- Queue-up emails to be sent up to 15x faster than web-based services
- Retrieve emails from external accounts
- Block pop ups, remove ads and background images

- Compress web pages for download speeds of 3 - 5 x faster than uncompressed pages

CHARACTERISTICS

- Dimensions: 114.3 x 83 x 32 mm
- Durability Specifications:
 - Military-grade ruggedness (MILSTD810F)
 - Protection class: IP65
- Easy to Use:
 - Stable, lay-flat design
 - Flip up antenna
 - Built-in menu/status display
- Flexible:

- Wi-Fi device ready
- App API for developers
- Robust accessory platform

INCLUDED IN THE PACK

- Battery
- Universal AC Travel Charger
- USB Charging/Data Cable
- Four International Adaptors
- DC Adapter (Car Charger)
- Protective Cover
- User Manual
- Legal Information Booklet
- GEOS Emergency Service Brochure



THALES MISSIONLINK 700™

THE DEFINITE SOLUTION FOR YOUR CRITICAL COMMUNICATION NEEDS

Thales MissionLINK 700 operates using Iridium Certus® broadband services and delivers critical communications to keep you connected regardless of the landscape.

It is the reliable solution for essential communications wherever your mission takes you. Whether you operate as part of a deployed force or as a single individual, this commercialised, military-grade solution is designed to meet your unique challenges through a simple, adaptable, and robust design.

CHARACTERISTICS

- Dimensions: 280 x 216 x 59 mm
- Weight: 2.8 kg
- Power: 12 VDC input, 11 A max (7 A avg.), includes powering external HGA-2 antenna
- Standard Data Rate: Up to 700 kbps (down), up to 352 kbps (up)
- Streaming IP: Up to 256 kbps
- Connectors front:
 - RJ-45 LAN (3) Class 3 PoE
 - RJ-45 WAN (1) for cellular connection
 - RJ-14 POTS (2) breakout
- Connectors rear:
 - DC power input (10-32V) MIL-STD-1275D, + 12V regulated
 - GPIO (RS-232, + 12V out, DISTRESS,

Radio Gateway, GPIO)

- TNC connector, RF connection to BAA-H2 antenna
- Wi-Fi reverse SMA
- SIM slot, standard
- Mechanical Vibration and Shock: MIL-STD-810G, Test Method 514.6, Proc. I, Category 20, Annex D MIL-STD-810G, Test Method 516.6, Proc. IV
- 3 standard & high quality VOIP voice lines
- SBD & circuit switch (up to 64 kbps)
- Location tracking
- PTT ready

ANTENNA SPECIFICATIONS

- High-gain, electronic phased array antenna to enable the fastest upload and download speeds that cover any

communications need from safety services to operational reporting and logging

- Size: 35.6 cm dia. x 10.2 cm h
- Weight: 3.2 kg
- Power: directly powered by the terminal at 24 VDC
- Operating temperature : -30 to +55 °C
- Mechanical Vibration and Shock: MIL-STD-810G, Test Method 514.6, Proc. I, Category 20, Annex D MIL-STD-810G, Test Method 516.6, Proc. IV



THALES MISSIONLINK 200™

A TRULY GLOBAL TERRESTRIAL SATCOM SOLUTION

MissionLINK 200 is specially designed to operate for both individuals and an entire deployed force under any environmental conditions. Its simple, adaptable, and robust design brings reliable voice, text, and web communications for fixed as well as mobile users.

MissionLINK 200 is powered by Iridium Certus®, the only satcom broadband network with pole-to-pole coverage. In the capacity of Iridium partner, IEC Telecom delivers high-end satcom services to its customers all over the globe since 2013. In addition, we offer a range of value-added services to ensure the best user experience for your remote teams.

CHARACTERISTICS

- Weight: 3.4 kg
- Dimensions: 5.8 x 30.5 x 22.9 cm
- Power Options
 - 10 – 32 V DC
 - AC/DC Supply with 12 V DC
- IP Rating: IP31
- Front Connectors
 - RJ-45 LAN (3) Class 2 PoE
 - RJ-45 WAN (1)
 - RJ-14 POTS
- Rear Connectors
 - DC Power Input (10 – 32 V) MIL-STD-1275D
 - DC Power Input (+12 V Regulated)

GPIO

- RS-232
- +12 V Out
- Emergency
- Radio Gateway
- Discrete I/O
- TNC – RF Connection to Antenna
- WiFi – Reverse SMA
- SIM Card Slot
- Mechanical Vibration and Shock
 - MIL-STD-810G w/Change 1
 - Test Method 514.7
- Category 4

ANTENNA SPECIFICATIONS

- Omni-directional antenna that enables the fastest upload and download speeds for safety, tracking, and location services.
- Weight: 0.7 kg
- Dimensions: 12.5 x 14 cm
- Power: 24 V DC (directly by the terminal)
- IP Rating: IP67
- Operational Temperature (Antenna): -40°C to +55°C
- Mechanical Vibration and Shock
 - MIL-STD-810G w/Change 1
 - Test Method 514.7
- Category 4





THURAYA IP +

WORK. EMAIL. SURF. CHAT. ANYWHERE.

The high-speed IP capabilities of Thuraya IP+ enable users to access corporate networks and connect with colleagues, family and friends via email, social media and applications – wherever and whenever they need it.

Providing ‘always-on’ mobile broadband access, Thuraya IP+ is ideal for a wide range of mission-critical operations such as telemedicine and disaster response.

Together with WAN optimizer, Thuraya IP+ enhances the end-user experience and boasts data speeds of up to 444 kbps on standard IP and 384 Kbps on streaming IP. Moreover, Thuraya IP+ easily supports 1 hour of continuous transmissions on a battery standby life of up to 36 hours. With a light-weight design and external antennae that work on land, water, and vehicles, alongside an unlimited data plan at a fixed monthly rate, Thuraya IP+ is ideal for a wide range of mission-critical operations as well as high bandwidth applications.

FEATURES

- Together with WAN Optimizer, enabling TCP acceleration and compression to enhance end-user experience
- Centralized filtering and reporting tool for control and better insight on usage
- Light-weight, mobile and compact
- Advanced usage reports to enhance the filter design

CHARACTERISTICS

- Dimensions: 216 x 216 x 45 mm
- Weight: 1.4 kg
- Interfaces: 1 Ethernet port; WLAN (WEP, WPA and WPA2 encryption)

- Web user interface
- User interface on terminal: LCD panel
- Standard IP: Send up to 444 kbps over a shared channel; Receive up to 444 kbps over a shared channel
- Streaming IP: Guaranteed quality of service 16, 32, 64, 128, 256 kbps or 384 kbps
- Battery life (typical use): 1 hour of continuous transmission at highest rate; up to 36 hours standby time
- Ingress protection: IP 55

INCLUDED IN THE PACK

- Thuraya IP+ terminal
- Thuraya IP+ lithium-ion battery

- AC/DC power supply: 100-240 Volts (AC)
- Ethernet cable
- Manual and drivers on CD-ROM

OPTIONAL ACCESSORIES

- Car charger
- Land external antenna
- Maritime external antenna
- Vehicle external antenna
- Battery
- WAN Optimizer

THURAYA WE

**SATELLITE & LTE HOTSPOT TO STAY CONNECTED
EVERYWHERE**

Stay connected everywhere you go with the new Thuraya Satellite and 4G/LTE Hotspot. The WE is the first dual mode hotspot developed to converge satellite with terrestrial communications. No matter where you are, stay in touch with your friends and family at all times.

Easy to use, the WE automatically switches between satellite and GSM networks using a simple button on the dedicated app. Transform your WE into a Wi-Fi hotspot and enjoy the Internet in a 30m range. Connect up to 10 smart devices to your hotspot and share your best memories on the Internet using Satellite or GSM connectivity!

CHARACTERISTICS

- System/Frequencies:
 - Satellite: Thuraya L-band satellite
 - GSM3G /4G LTE: 800 MHz, 850 MHz, 900 MHz, 1800 MHz, 2100 MHz, 2600 MHz
- Dimensions: 230 x 197 x 24 mm
- Weight: 1.1 kg
- 1 SIM card slot (mini)
- Voice and messaging services: Circuit-switched-satellite calls, VOIP with 3rd party apps, SMS
- Data services: Satellite: GmPRS up to 384kbps

- Battery life – in transmission: GSM: Up to 9h - Sat: up to 3h
- Battery life – Stand-by Time: GSM: Up to 15h - Sat: up to 6h
- Global Navigation Satellite System (GNSS): GPS, BeiDou, Glonass
- Interfaces: WiFi up to 10 users
- Router features: Firewall, Mac Filtering, DMZ, NAT, Port
- Forwarding Ingress Protection: IP54
- Multi-language firmware 8 supported

INCLUDED IN THE PACK

- Thuraya WE
- AC power adaptor
- SIM adaptors
- Arabic and English user guides



THURAYA IP VOYAGER

FOR QUICK CONNECTIVITY ON-THE-MOVE

Thuraya IP Voyager is a reliable, high-quality and affordable vehicular satellite terminal designed for a wide range of mission-critical on-the-move operations such as border patrol, defense and disaster response in areas inadequately served by terrestrial networks. The terminal enables users to collaborate reliably and efficiently with colleagues using video, data and VoIP to achieve mission-critical tasks, where failure is not an option.

Designed to operate at IP broadband speeds of up to 444kbps, Thuraya IP Voyager is the only vehicular terminal in the market capable of achieving streaming IP speeds of up to 384kbps as well as user definable asymmetric streaming.

FEATURES

- **Easy installation:** Thuraya IP Voyager is built for comms-on-the-move and can be easily installed in any vehicle. The antenna with its magnetic feet can be fitted in seconds and vehicular satellite unit has simple plug-and-play features that enable a hassle-free experience, enabling swift mission deployment.
- **Durable and dependable:** Thuraya IP Voyager has been purpose-built for use in vehicles. The unit has a rigid chassis with internal components that can withstand the potential of a high vibration environment. The antenna holds an IP56 Ingress Protection Rating which provides protection from dirt, dust, water, oil and other non-corrosive materials to withstand the harshest environments.
- **High-speed streaming capabilities:** Boasting speeds of up to 444kbps while on the move, Thuraya IP Voyager is the only terminal in the market capable of achieving streaming IP speeds of up to

384kbps.

- **Asymmetric streaming:** Thuraya IP Voyager can be configured to allow users to manage their upload and download speeds to match their usage and ensure significant savings.
- **Unlimited data usage:** Users can conduct all field operations, including video conferences, file transfers and other high-bandwidth applications at a fixed monthly rate, with no additional costs.
- **Congestion-free network:** The satellite network's dynamic resource allocation minimises any signal congestion in areas where there are high volumes of communication traffic, ensuring that you stay connected when it matters most.

BDU (BELOW DECK UNIT)

- Weight: 2.3 kg
- Dimensions: 281 x 233 x 46 mm
- Main power input: 10-32 Volt DC, 70W

max (7A max)

- Mechanical vibration: 200-2000 Hz, 0.3 m²/s³ MIL-Spec 810B

ANTENNA

- Weight: 2.0 kg
- Dimensions: 252 mm x 119 mm
- IP rating: IP56

INCLUDED IN THE PACK

- Thuraya IP Voyager BDU
- Tracking antenna, 6 meter RF cable, power cable, magnetic mounts
- User Guide and Installation Guide
- Note: The cable length can be changed, but the maximum loss must be less than <10 dB at 1.6 GHz

INMARSAT BGAN EXPLORER 325 BY COBHAM



GLOBAL CONNECTIVITY ANYWHERE, PARKED OR ON-THE-MOVE

Explorer 325 is a great compact solution for on-the-move communications that consists of three fully integrated units – a transceiver, an IP handset, and a magnetic roof mountable antenna. The solution is especially designed for robust and durable use, and quickly turns your vehicle into a mobile communications hub. Explorer 325 keeps you connected at no extra cost (fixed pricing and no roaming fees) regardless of the number of international borders you cross.

FEATURES

- Auto tracking antenna
- No roaming fees
- Telephone Functionality : phone book, traffic logging, message indication, restricted dialling
- Set-up and Router Functionality : webserver, NAT router, DHCP, remote management, SIP server, PPPoE, PoE

CHARACTERISTICS

- Dimensions
 - Transceiver: 278 x 231 x 41 mm
 - Antenna: 349 x 128 mm
- Weight
 - Antenna: 3.6 kg
 - Transceiver: 2.2kg
- Voice: 4 kbps
- Premium Voice: 64 kbps (elevation>45°)
- Standard IP: Up to 464 kbps

- Streaming IP: 32, 64, 128 kbps
- SMS: 160 characters
- User Interface
 - Power On/Off Button
 - Status LED
 - Thrane & Thrane Web Interface
 - Factory Default Reset
- 2 x Ethernet LAN RJ-45 ports
- 1 x RJ-11 analog phone port
- 5 pin general purpose I/O connector
- Antenna connector
- DC power connector with remote on/off and locking mechanism
- BGAN SIM card slot
- Ingress Protection
 - IP 30 (transceiver)
 - IP 56 (antenna)
- Languages: UK, FR, DE, ES, RU and CN
- Temperature

- Operational: -25 to +55°C
- Survival: -40 to +80°C
- Storage: -40 to +85°C
- Relative Humidity: 95% non-condensing at +40°C
- DC input range: 10.5-32VDC
- Power (max) @10.5-32V: 150W

INCLUDED IN THE PACK

- Explorer 325 transceiver
- Explorer 325 tracking antenna with magnetic mount
- Thrane IP handset with cradle and coiled cable
- Antenna cable, coax with TNC plug (2.7m)
- Ethernet Cable (2m)
- Quick Start Guide CD with manuals
- 12/24V DC input cable (3m)

INMARSAT BGAN EXPLORER 510

BY COBHAM



ULTRA-PORTABLE SATELLITE BROADBAND TERMINAL

Explorer 510 is based on the Inmarsat BGAN network and is the ideal combination of performance and portability.

Smaller than a regular laptop and weighing less than 1.4 kg, this satellite terminal is easy to carry, deploy and offers IP connectivity up to 464 kbps (standard IP).

It also provides streaming IP connectivity up to 128 kbps (guaranteed connectivity), voice capabilities and is equipped with a WiFi interface.

FEATURES

- Explorer Connect App for IOS and Android
- Convert your smartphone into a satellite phone
- Access your terminal from your smartphone
- Explorer LTE Modem for USB (optional):
 - Connect to the local cellular network and use the Explorer 510 as wireless router for all your portable devices (smartphone, laptop, tablet)

CHARACTERISTICS

- Dimensions: 202 x 202 x 51.8 mm
- Weight: 1.4 kg

INTERFACES

- 1 x USB 2.0 Port
- WLAN Access Point
- Standard IP: Send up to 464 kbps over a shared channel;
- Streaming IP: 32, 64 or 128 kbps
- Wi-Fi access point
- SMS 160 characters supported
- Ingress Protection: IP66
- Standby Time: 36 hours
- Transmit Time: 2 hours 15 min
- Recharge Time: Less than 3 hours

INTERFACES

- LED (WLAN, status)

POWER

- Power button
- USB Host
- Cobham web interface

INCLUDED IN THE PACK

- Explorer 510 Terminal
- Rechargeable Lithium Ion Battery
- Explorer Softbag
- USB to Ethernet converter cable
- 100-240 VAC power supply
- Multi-language quick start guide
- Multi-language webserver and embedded manual (ENG, FR, DE, ES, RU, JP and CN)

INMARSAT BGAN EXPLORER 710

BY COBHAM



ULTRA-PORTABLE HIGH DATA RATE QUALITY

The new Explorer 710 is at the forefront of high-speed & ultra-portable satellite communications.

Ultra-portable & lightweight, Explorer 710 enables users to benefit from the High Data Rate (HDR) service from Inmarsat.

With a guaranteed bandwidth up to 650 kbps, users can leverage the fastest on-demand video streaming service via satellite and drastically enhance the quality of their live broadcast & remote communications.

FEATURES

- Support for BGAN Bonding (1Mbps QoS)
- Built-in SIP Server
- Smartphone Apps
- Remote Activation & Management
- Battery Hot Swap

CHARACTERISTICS

- Dimensions: 332 x 279 x 54 mm
- Weight: 3.2 kg
- Interfaces:
 - 2 x Ethernet Port
 - 1 x analog RJ11 Phone/Fax
 - 1 x USB Port

INTERFACES

- WLAN Access Point
- Standard IP: Send up to 492 kbps over a shared channel;
- Streaming IP: 32, 64, 128, 256 kbps or
- BGAN X-Stream
- High Data Rate Streaming: 650 kbps or 325 half channel HDR
- Asymmetrical Mode Available
- ISDN: UDI 64kbps/ RDI 56 kbps
- SMS 160 characters supported
- Ingress Protection: transceiver IP52, antenna IP66
- Standby Time: 36 hours, 25°C
- Transmit Time: 2.5 hours
- Recharge Time: 2.5 hours

INTERFACES

- PMOLED Display
- 5 Navigation Keys
- Compass

INCLUDED IN THE PACK

- Explorer 710 Transceiver
- Antenna
- Rechargeable Lithium Ion Battery
- Antenna Cable
- 2M ISDN/LAN Cable
- 115/230VAC Power Supply
- Quick Start Guide
- CD with Manuals

INMARSAT BGAN EXPLORER 727 BY COBHAM



MULTI-USER DEVICE WITH EXTENSIVE PERFORMANCE

Composed of three units (a transceiver, a IP handset, and a roof mountable antenna), Explorer 727 is a high-end BGAN solution for vehicles. Ideal for multiple users on-the-move, it automatically tracks satellite positions and offers high-speed connectivity even at speeds in excess of 200 km/h. With the highest streaming rates available with the BGAN X-Stream when the terminal is on-the-pause, Explorer 727 facilitates live streaming and store-and-forward transmissions from hotspots across the world.

FEATURES

- Comprehensive vehicular communications hub
- High-speed broadband on-the-move
- Live streaming or store-and-forward transmissions
- Telephone Functionality : phone book, traffic logging, message indication, restricted dialling
- Set-up and Router Functionality : webserver, NAT router, DHCP, remote management, SIP server, PPPoE, PoE

CHARACTERISTICS

- Dimensions
 - Transceiver: 273 x 231 x 42.5 mm
 - Antenna: 477 x 152 mm
- Weight
 - Antenna: 6 kg
 - Transceiver: 2.5 kg
- Voice: 4 kbps
- Premium Voice: 64 kbps (elevation>20° on-the-move, elevation>5° on-the-pause)

- Standard IP: Up to 492 kbps
- Streaming IP: 32, 64, 128,256 kbps
- BGAN X-Stream: From 384 kbps on-the-pause
- SMS: 160 characters
- User Interface
 - Power On/Off Button
 - Status LED
 - Thrane & Thrane Web Interface
 - Factory Default Reset
- 4 x Ethernet LAN RJ-45 ports
- 2 x RJ-11 analog phone port
- 1 x ISDN
- 5 pin general purpose I/O connector
- Power over Ethernet (PoE)
- Antenna connector
- DC power connector with remote on/off and locking mechanism
- BGAN SIM card slot
- Ingress Protection
 - IP 30 (transceiver)

- IP 56 (antenna)
- Languages: UK, FR, DE, ES, RU and CN
- Temperature
 - Operational: -25 to +55°C
 - Survival: -40 to +80°C
 - Storage: -40 to +85°C
- Relative Humidity: 95% non-condensing at +40°C
- DC input range: 10.5-32VDC
- Power (max) @10.5-32V: 150W

INCLUDED IN THE PACK

- Explorer 727 transceiver
- Explorer 727 tracking antenna
- Thrane IP handset with cradle and coiled cable
- Antenna cable, coax with TNC plug (2.7m)
- Ethernet Cable (5m)
- Antenna Mounting Kit (fixed / rail)
- Quick Start Guide CD with manuals
- 24V DC input cable (6m)

INMARSAT BGAN EXPLORER 323 BY COBHAM



ULTRA-COMPACT COMMS-ON-THE-MOVE BGAN TERMINAL

Explorer 323 is an ultra-compact BGAN terminal for voice and data communication on-the-move - a perfect match for PRISM PTT+. Simply place the terminal on the roof with optional magnetic mounts, and connect your phone to the Explorer app or log onto the wireless network with your PC to turn your vehicle into a mobile communications hub. As an ultra-portable vehicular terminal, Explorer 323 is the first terminal with an Inmarsat Class 12 type approval, enabling it to be used for both M2M and traditional BGAN, offering mobile broadband connectivity wherever you go at fixed pricing and no roaming fees. With Explorer 323, you always know your cost of communication regardless of the number of borders you cross.

FEATURES

- Combined transceiver and switched beam antenna
- Integrated WiFi
- No roaming fees
- No moving parts
- First terminal with Inmarsat Class 12 type approval

CHARACTERISTICS

- Dimensions 97 x 321 mm
- Weight 3.6 kg
- Voice: 4 kbps AMBE+2
- Premium Voice: 64 kbps (elevation>45°)
- Guaranteed service: Elevation >20°
- Standard IP: Up to 200 kbps
- Streaming IP: 16, 32 kbps

- SMS: 160 characters
- User Interface
 - Status LED
 - Web Interface
 - Factory Default Reset
- 1 x WLAN interface
- 1 x LAN interface
- Combined DC power and Ethernet connector
- Hybrid cable, wires
 - 2 x Power
 - 1 x Ignition
 - 4 x Ethernet
 - 1 x Shield
- BGAN SIM card slot
- Ingress Protection : IP66
- Languages: UK, FR, DE, ES, RU, CN and PT

- Temperature
 - Operational: -25 to +55°C
 - Survival: -40 to +80°C
 - Storage: -40 to +85°C
- Relative Humidity: 95% non-condensing at +40°C
- DC input range: 10.5-32VDC
- Power (max) @10.5-32V: 35W

INCLUDED IN THE PACK

- Explorer 323 terminal (combined transceiver and switched beam antenna)
- Combined DC Power and Ethernet Cable (6m, open-ended)
- Installation Guide CD with manuals
- Drilling template for mounting

INMARSAT BGAN 9211 HDR

BY HUGHES



HIGH DATA RATE (HDR) MOBILE SATELLITE TERMINAL WITH VOICE AND WIFI ACCESS POINT

As the world's smallest HDR capable BGAN satellite terminal, Hughes 9211 HDR offers broadband speeds of over 650 kbps with multi-user WiFi access. With asymmetric streaming, users can customise the service to suit their needs and minimise costs.

Hughes 9211 HDR enables on-the-move communications with a rugged, compact, and lightweight design. It is ideal for governments, NGOs, mobile healthcare providers, and media personnel.

Hughes 9211 HDR is powered by the high-end L-band Inmarsat network. Having a long-standing relationship with Inmarsat, IEC Telecom will ensure the best quality of service and provide a range of value-added services to support the requirements of your mission.

FEATURES

- High data rate over 650 kbps
- Rugged, compact, and ultra-portable
- World's smallest hdr bgan terminal
- Asymmetric streaming for bespoke service
- Cost-effective and flexible options

CHARACTERISTICS

- Dimensions: 232 x 292 x 51 mm
- Weight: 2 kg
- Stand by time: up to 36 hours
- Rechargeable lithium ion battery
- Temperature
 - Operating: -5° C to +55° C (with battery); -25° C to +55° C (without battery)
 - Battery Charging: 0° C to 40° C

- Storage: -25° C to +55° C (with battery); -25° C to +80° C (without battery)
- Humidity: 95% RH at +40° C
- Frequencies: 1626.5–1660.5 MHz (Tx); 1525–1559 MHz (Rx)
- Vibration: 200-2000 Hz, 0.3m2/s3, MIL-SPEC 810B
- IP Rating: IP65
- User-friendly LCD display
- 802.11 b/g/n WiFi supporting multiple user access
- Advanced Web user interface
- Automatic context activation
- External antenna options
- HDR streaming

INTERFACES

- Ethernet Port (RJ45)

- POTS connection for voice and fax (RJ11)
- External antenna connector
- Compass and audio tone to assist in antenna pointing

INCLUDED IN THE PACK

- Hughes 9211-HDR Terminal
- Rechargeable lithium ion battery pack
- 5m Ethernet cable
- AC/DC Adaptor
- 3 x IEC Cables (UK, EU, ans US)

OPTIONAL ACCESSORIES

- External fixed antenna
- DC-DC Power Adaptor
- Spare lithium battery
- Extended Warranty Options

INMARSAT BGAN 9450

BY HUGHES



WORLD'S SMALLEST MOBILE BGAN TERMINAL

As the world's smallest mobile BGAN satellite terminal, Hughes 9450 offers broadband speeds of up to 464 kbps for any vehicle. Its fully autonomous tracking antenna acquires and tracks the BGAN satellite signal while on-the-move. With a rugged, compact, and simple design, the mini-antenna can be permanently mounted for fleet-style installation or an optional magnetic roof mount can be used for quick installation and removal. With multi-user WiFi access, Hughes 9450 is ideal for government use, first responders, remote fleet management, and public safety operations.

FEATURES

- Smallest mobile BGAN terminal
- Up to 464 kbps broadband speed
- On-the-move connectivity
- Fully autonomous tracking antenna
- Built-in WiFi access point
- Compact and simple design

CHARACTERISTICS

- Weight
 - Transceiver: 2.3 kg
 - Antenna: 2.0 kg

- Dimensions
 - Transceiver: 281 x 234 x 46 mm
 - Antenna: 252 x 119 mm
- Operational temperature (°C): -25°C to +55°C
- Humidity: 95% RH at +40°C
- IP Rating: IP56
- DC Input: 12 or 24 V DC
- Power: 32 W (idle); 65 W (transmit)
- IP Data: 464 kbps (shared); 128 kbps (streaming)
- Internal web user interface (UI)
- Auto context activation feature
- Up to 11 simultaneous sessions capability

- Built-in WLAN access point
- 4x PoE ports
- 2x RJ11 ports
- 1x ISDN port

IN THE BOX

- Hughes 9450-C11 Mobile Satellite Terminal
- Tracking Antenna
- 8m RF Cable
- Power Cable
- User Guide
- Installation Guide

INMARSAT BGAN 540 M2M BY COBHAM

WORLD'S FIRST DUAL-MODE BGAN M2M AND CELLULAR TERMINAL

Designed for operation in remote and unmanned locations, Explorer 540 provides critical connectivity over both BGAN and cellular 2G/3G/LTE networks. Lightweight, robust, and easy to set-up, it ensures the most cost-effective communication service with failover capabilities.

Explorer 540 provides remote management of the terminal via SMS and delivers a reliable global two-way IP data service for data backhaul, asset tracking, surveillance, and telemetry.

Explorer 540 is powered by the high-end L-band Inmarsat network. Having a long-standing relationship with Inmarsat, IEC Telecom will ensure the best quality of service and provide a range of value-added services to support the requirements of your remote unit.

FEATURES

- Automatic failover between BGAN and cellular network
- Ideal for unmanned and remote operations
- Remote terminal management via SMS
- Lightweight and durable for outside mounting
- BGAN M2M certified and BGAN Class 2 Type Approved

CHARACTERISTICS

Terminal Specifications

- Weight: 1.6 kg
- Dimensions: 202 x 202 x 51.8 mm
- Data Capabilities
 - Standard IP: Up to 464 kbps
 - Streaming IP: 32, 64, 128 kbps

- Voice Capabilities
 - Standard: 4 kbps
 - Premium: 3.1 kHz audio, 64 kbps
- EIRP: 15.1 dBW
- Power
 - 10.5 – 32 V DC
 - PoE IEEE 802.3 Type 2 Class 4
 - Consumption: 1.9 W (Standby); 19 W (Transmit)
- Temperature
 - Operational (ambient): -40°C to +55°C
 - Storage: -55°C to +80°C
- Relative Humidity: 95% non-condensing at +40°C
- Robustness: 0.5 m drop on concrete (operational, 95% survival)
- IP Rating: IP66
- Micro USB Interface

- BGAN SIM Card Slot
- RJ45 Ethernet Interface with PoE
- 8-pin Ethernet Interface
- 3-pin I/O
- 2-pin DC Power Input

INCLUDED IN THE BOX

- 540 Terminal
- Pole Mount
- 2 x Cable Glands
- 1 x Blanking Plug
- Security Torx
- Allen Key
- Multi-language Webserver
- Quick Start Guide



TURN-KEY SOLUTIONS

FROM INSTALLATION TO MAINTENANCE, OUR TEAM WILL ENSURE THAT YOU ENJOY THE BEST QUALITY OF SERVICE OVER YOUR SATCOM TERMINAL

- ✓ Preventive and/or scheduled maintenance
- ✓ Modifications and reconfigurations
- ✓ Equipment repair or replacement
- ✓ Spares provisioning
- ✓ Testing toolkit

#satelliteitup #satelliteitup #

#satelliteitup :

#satelliteitup #satellit

IEC TELECOM
PRODUCTS | PHONES

satelliteitup

teitup #satelliteitup #satellit

teitup #satelliteitup

#satelliteitup #satelliteitup





IRIDIUM 9555



THE SMALLEST AND MOST POWERFUL IRIDIUM PHONE

Iridium 9555 provides reliable connectivity from anywhere and can handle any environment. Iridium 9555 is ruggedly built and presents a more hand-friendly form and aerodynamic features such as an internally stowed antenna.

It incorporates innovations such as integrated speakerphone, improved SMS and email messaging capabilities and an upgraded Mini-USB data port. It continues the evolution of satellite phones, making communication more efficient and effective for users.

Iridium 9555 features an intuitive user interface – making reliable communication more efficient than ever. It has been made so easy that users can start making calls right out of the box, skipping the traditional learning curve.

CHARACTERISTICS

- Dimensions: 143 x 55 x 30 mm
- Weight: 266 g
- Battery Talk Time: Up to 4 hours
- Battery Standby Time: Up to 30 hours
- Data: Up to 13 kbps
- Voice: 2.4 kbps
- Integrated speakerphone
- Headset and hand-free capability
- 200 characters illuminated graphic display
- Volume, signal and battery strength meters

INCLUDED IN THE PACK

- Illuminated weather-resistant keypad
- Integrated speakerphone
- Quick-connect to Iridium voicemail
- Two-way SMS and short email capability
- Pre-programmable International Access Code (00 or +)
- Mailbox for voice, numeric and text messages
- Selectable ring and alert tones (8 choices)

INTERFACES

- USB interface
- Mini USB data port

INCLUDED IN THE PACK

- Iridium 9555 handheld
- AC charger
- International plug kit
- DC travel charger
- USB data cable
- Auxiliary antenna adapter
- 5' External auxiliary antenna
- Hands-free headset
- Leather case
- Quick start guide, user guide on CD

IRIDIUM EXTREME®



MORE FEATURES THAN ANY OTHER HANDSET

Iridium Extreme® is engineered with more features than ever before and with more accessories than any other satellite phone on the market. Providing continuous connectivity around the world, it provides users with many advanced features: customisable GPS and location-based services, online tracking, emergency SOS notification, etc.

With an IP65 rating, it is dust and splash proof. The keys on the phone are large and backlit, so the phone is easily operable anywhere, even with thick gloves on. Combined with a rubber grip on the outside edges, the phone is very accessible, no matter what situation you're in. If you won't have access to a charging port during your trip, you can either buy another Iridium Extreme® battery or simply get an external battery to double or triple the standby time.

CHARACTERISTICS

- Dimensions: 140 x 60 x 27 mm
- Weight: 247 g
- Battery Talk Time: Up to 4 hours
- Battery Standby time: Up to 30 hours
- Display: 200 characters illuminated graphic display
- Volume, signal and battery strength meters
- Integrated speakerphone
- Quick-connect to Iridium voicemail
- Two-way SMS and short email capability
- Pre-programmable International Access Code (00 or +)

- Mailbox for voice, numeric and text messages
- Military-grade ruggedness
- Ingress Protection: IP65
- Call history retains received, missed and dialed calls
- User-configurable call timers to manage costs
- Keypad lock and PIN lock for additional security

INCLUDED IN THE PACK

- Iridium Extreme® handheld
- Travel charger with international adapters
- Car Charger
- USB Data Cable
- Hands-free earpiece with microphone
- 2 accessory adaptors (necessary to charge the handheld and connect the antennas and accessories via USB Cable)
- Magnetic vehicle mount antenna with cable
- Leather case
- User Manual, Quick Start guide, CDROM with software

IRIDIUM EXTREME® PTT

MOBILE HANDSET DESIGNED TO SUPPORT HIGH INTENSITY USERS EVEN IN THE HARSHTEST ENVIRONMENTS

Iridium Extreme® PTT is a completely mobile satellite handset, removing the need to be in or around vehicles. It is engineered to support critical communications and high intensity users even in the harshest environments, and offers crystal clear voice communication for an evolving talk group where the users can be automatically registered via visual and audio scans.

Iridium Extreme® PTT is the toughest push-to-talk enabled satellite phone in the market whose configuration can be adjusted over-the-air.

FEATURES

- Diamond treaded, taper grip ergonomics
- Integrated loudspeaker
- Rugged, high-gain antenna
- Daylight-readable, glare-resistant display
- Mini-USB data port
- 25mm headset and hands-free capability

BENEFITS

- Automatic registration of talk group users
- Visual and audio talk group scan
- Maintains critical communications with device talker ID and PTT service status
- High audio loudspeaker and rugged,

high-gain antenna

- Water, shock, and dust resistant (IP65 rated)

CHARACTERISTICS

- Size: 140 x 60 x 32 mm
- Weight: 268g
- Temperature range: -10C to + 55C
- Battery Standby Time: Up to 54 hours
- Battery Talk Time: Up to 6.5 hours
- PTT Standby time: Up to 16.5 hours
- PTT Talk Time: Up to 5 hours

INCLUDED IN THE PACK

- Iridium Extreme® PTT device
- Leather case

- High capacity battery
- Travel charger with international adapters
- Car charger
- USB data cable
- Two accessory adaptors
- Magnetic vehicle mount antenna with 5' cable
- Hands-free earpiece and microphone
- User manual
- Shoulder-mounted carrying case, docking stations and external antenna sold separately.



BEAM POTSDOCK IRIDIUM®

HANDSFREE DOCKING STATION AVAILABLE FOR IRIDIUM EXTREME® AND 9555

Beam PotsDOCK Iridium® is a compact docking station specifically designed for the Iridium® handsets and to support RJ11/POTS, bluetooth, and tracking features for fixed and mobile applications. The docking station has in-built echo cancelling and full duplex technologies to provide superior voice quality and professional handsfree or private calls. Besides the RJ11/POTS interface, the PotsDOCK Iridium® alternatively interfaces with PABX system to represent a standard phone network.



FEATURES

- High-quality handsfree calls
- In-built echo cancelling
- Short-burst and circuit-switch data
- PABX integration
- Tracking & alert monitoring capable

CHARACTERISTICS

- Dimensions : 212 x 83 x 76 mm
- Weight: 0.45 kg

- RJ11/POTS connectivity
- Iridium® antenna 3.3 VDC
- External GPS antenna
- Bluetooth
- Mini-B 5 pin USB 2.0 data port
- AC connector 12V
- Operating Temperature: -30 to +70°C
- Storage Temperature: -35 to +85°C
- Relative Humidity: 85% RH non-condensing
- Power Consumption: 12 VDC

INCLUDED IN THE PACK

- PotsDOCK Cradle for Iridium Extreme® or Iridium 9555
- Universal Mounting Bracket (RAM)
- AC power adaptor
- DC power cable / fuse kit
- Quick Start Guide with User Manual



BEAM ISATDOCK 2 LITE

DOCKING STATION FOR INMARSAT'S ISATPHONE 2

Beam IsatDock2 LITE enables the IsatPhone 2 handset to be always active and ready to receive incoming calls, which can be answered via a bluetooth accessory or the optional privacy handset. It allows easy access to standard voice and data services for both land and maritime applications as well as the handset's antenna and power to be permanently connected to the dock. Besides charging the handset, the IsatDock2 LITE comes with a USB data port, in-built ringer, and fully supports the functionality of the Assistance Button, Personal Alert, and Tracking.

FEATURES

- Slim line design with high-quality ABS plastic
- Single button release
- Tracking and SOS functionality
- Enhanced docking mechanism
- Adjustable in-built ringer

CHARACTERISTICS

- Dimensions
 - Dock: 229 x 99 x 76 mm
 - Outer Box: 290 x 170 x 190 mm

- Weight
 - Dock: 0.5 kg
 - Box: 1.3 kg
- Inmarsat antenna
- GPS antenna
- RJ-9 connector
- Privacy handset option
- Bluetooth via handset
- Accessory/Ignition sense
- 4-way microFIT AC/DC adapter 10-32 VDC
- USB Micro
- Status LED

- 2 year repair or replacement warranty
- Operating Temperature: -35 to +85°C
- Storage Temperature: -20 to +70°C
- Relative Humidity: < 75% RH
- Power Consumption w/o handset: 1.6W

INCLUDED IN THE PACK

- IsatDock2 LITE
- 2 x IsatDock2 adaptors
- Universal Mounting Bracket (RAM)
- 10-32 DC power cable
- Quick Start Guide with User Manual



BEAM DRIVEDOCK EXTREME CORDED PUSH-TO-TALK (PTT)

DOCK FOR IRIDIUM EXTREME® PTT SERVICE

Beam's DriveDOCK Extreme Corded Push-To-Talk Bundle is a cost effective PTT solution that supports all features of the Iridium Extreme® PTT service. It also supports handsfree speakerphone attached to the dock, making it ideal for fixed vehicle installations. The DriveDOCK Extreme Corded PTT provides clear and improved PTT audio quality via the loudspeaker in the corded handset.

FEATURES

- High-quality handsfree calls
- Rugged mic/speaker handset
- Alarm loop
- Improved audio quality
- Supports Iridium phone and PTT mode

CHARACTERISTICS

- Dimensions
 - Dock: 212 x 83 x 76 mm
 - Outer Box: 140 x 330 x 125 mm

- Weight
 - Dock: 0.48 kg
 - Box: 1.54 kg
- 4-pole 3.5mm audio jack
- Mini-B 5 pin USB 2.0
- Operating Temperature: -30 to +70°C
- Storage Temperature: -35 to +85°C
- Relative Humidity: < 85% RH non-condensing
- Power Consumption: 9-32 VDC

INCLUDED IN THE PACK

- DriveDOCK Extreme
- C1 corded PTT microphone/speaker
- Speaker & Microphone
- Universal Mounting Bracket (RAM)
- Universal Mounting Bracket for C1 microphone/speaker
- DC power cable / fuse kit
- User Manual

ICOM IC-SAT100

SINGLE MODE PTT – SATELLITE RADIO WALKIE TALKIE, OFFERING REAL-TIME COMMUNICATIONS ALL AROUND THE WORLD

IC-SAT100 provides the loud, crisp Iridium® Push-to-Talk service in a highly durable handheld radio with the user attributes of a terrestrial LMR.

Thanks to its simple & easy-to-use user interface with robust body, it can be used for group calls (up to 15 groups) and is largely independent of terrestrial infrastructure.

Users can immediately start talking to all the radios in the same talk-group by just pushing the transmit (PTT) button.

IC-SAT100 offers secure conversations with AES 256-bit encryption.

FEATURES

- Simple land mobile radio with features that radio users need most
- Large high audio front facing speaker
- Top-facing talk group selector and volume
- Removable/replaceable flexible antenna
- Extreme durability and feel
- 4 soft keys (no-keypad)
- Real-time, low latency communication
- Built-in Emergency Key

CHARACTERISTICS

- Dimensions: 135 x 57.8 x 32.8 mm

- Weight: 300g (with BP-300 and antenna)
- Battery Talk Time: Up to 7 hours
- Battery Standby Time: Up to 14.5 hours
- Operational temperature range: -30°C to +60°C
- Built-in Bluetooth and GPS receiver
- Multiple language display (English, Chinese, French, Japanese, Spanish)
- Full MIL Std 810F and IP 67 dust, shock, moisture
- Text message and voice recording
- 14-Pin connector for LMR accessories
- USB connector

- SMA type antenna connector for an external antenna
- Compatible with other Iridium® PTT models, including Iridium Extreme® PTT
- Interoperability with IDAS and analog radios through the Optional VE-PG4, RoIP Gateway

INCLUDED IN THE PACK

- IC-SAT100 PTT
- BP-300 battery pack
- BC-241 desktop charger
- BC-242 AC adaptor
- FA-S102U antenna
- MBB-5 belt clip



ICOM IC-SAT100M

REAL-TIME GLOBAL PTT RADIO COMMUNICATIONS FOR IN-BUILDING AND IN-VEHICLE USE

Offering real-time communications at the push of a button anywhere in the world, ICOM IC-SAT100M is a dedicated satellite push-to-talk (PTT) radio that operates on the pole-to-pole Iridium® network. Leveraging LEO satellites, its state-of-the-art PTT button instantly connects users with all the radios in the same talkgroup.

ICOM IC-SAT100M can easily interconnect with an IP phone, WLAN, LTE, IDAS digital, and analog transceivers. Providing reliable network coverage, low-latency communication, and voice recording function with an integrated multi-functional speaker-microphone, this versatile satellite radio is ideal for both in-building and in-vehicle use.



FEATURES

- Real-time PTT radio talkgroup communications
- Pole-to-pole network coverage over the Iridium network
- Multi-functional speaker-microphone
- Integrated GPS receiver
- IP67 waterproofing and dust protection

CHARACTERISTICS

- Weight
 - Antenna: 500 g
 - Main Unit: 950 g
 - Main Unit + Microphone: 1200 g
- Dimensions

- Antenna: 76.8 x 200 x 76.8 mm
- Main Unit: 125 x 29 x 156.5 mm
- Microphone: 59.5 x 134.6 x 30.1 mm
- Operational temperature (°C): -30°C to +60°C
- Power Supply Voltage: 13.2 V / 26.4 V DC
- Audio Output Power
- Internal Speaker: 1500 mW typical (8 Ω load)
- External Speaker: 4 W typical (4 Ω load)
- Frequency: 1616 MHz to 1626.5 MHz
- Ingress Protection
- Antenna: IP67
- Main Unit: IP54

- Microphone: IP55
- Antenna SMA
- Integrated GPS Receiver
- Built-in Bluetooth Capability
- Multiple Language Display
- AES 256-bit Encryption
- Short Data Message
- Talkgroup: Up to 15

IN THE BOX

- Multi-functional speaker-microphone
- OPC-2435 DC Power Cable
- OPC-2102 LAN Cable (20m)
- Mobile Bracket

THURAYA FDU XT

FIXED DOCKING UNIT FOR THURAYA XT

The FDU-XT is a home and office docking adaptor that allows you to use the Thuraya XT, XT Pro and XT Dual phones in an indoor setting. Simply connect the FDU-XT to the antennas; then, dock the Thuraya handset into the cradle, and start to enjoy satellite phone connectivity. Easy to install and operate, it supports Voice, Data, and Fax transmissions, and comes with SAT and GPS antennas and 25m cables to ensure seamless connectivity.

FEATURES

- Easy to install and operate
- Compatible with Thuraya XT satellite phones
- Supports high-quality voice transmission via auxiliary handset, speakerphone or any analogue extension telephone
- Charges a Thuraya XT satellite phone while docked in the cradle
- Supports GPRS services with USB port or DTE
- Supports circuit switched data service at speeds up to 9.6 kbps
- Supports PABX connection
- Dimensions: 221 x 176 mm

INTERFACES

- 3 RJ-11:
 - External telephone connection (voice call)
 - External G3 fax connection (fax call)
 - Auxilliary handset connection (voice call)
 - 1 x RS-232 serial connection
 - 1 x USB PC connection
 - 2 x SMA connectors:
 - Satellite antenna connection
 - GPS antenna connection
- POWER**
- Universal AC/DC power supply 110-240V
 - Input power DC 12V/24V/34V

INCLUDED IN THE PACK

- FDU-XT main unit
- Auxilliary handset
- SAT antenna with 25 m cable
- GPS antenna with 25 m cable
- Universal power supply
- Wall mounting bracket
- USB cable
- RJ-11 cable
- Support CD
- User manual



THURAYA MARINESTAR

DEPENDABLE AND LOW-COST SATCOM SOLUTION FOR HUMANITARIAN MISSIONS

Thuraya MarineStar blends robust design with unprecedented functionality to provide flawless voice communications, enabling constant tracking and monitoring over Thuraya's expansive satellite network. Initially developed to support marine communications, it has proven to be a perfect & cost-effective back-up solution for humanitarian missions.



CHARACTERISTICS

- Dimensions:
 - BDU: 203 x 190 x 72.7 mm
 - ADU: 185 x 170 mm
- Weight:
 - BDU: 1.07 kg
 - ADU: 1.30 kg

MORE POWER FOR USERS

- Circuit-switched voice
- Robust design
- Quick and easy to install
- Possibility to connect to PBX
- SMS
- GmPRS (externally via serial interface)
- OTA (over-the-air) programming capability
- Versatile interface functions
- Radio silence capability
- SOS alert

- Push notifications for weather, news and other alerts
- Flexible tariff plans with no long-term commitment

HUMANITARIAN USE CASES

- Prepaid scratch cards to extend welfare programme for the mission staff
- Akin to public phone for humanitarian camps
- Enabling prepaid connectivity for third parties operating on the project site

HARDWARE

- IP Rating:
 - ADU: IP56
 - BDU: IP32
- Operating temperature:
 - ADU: -25°C to +55°C
 - BDU: -15°C to +55°C
- Physical interfaces:
 - GPIO -2in -2out
 - RS-232

- NMEA support
- RJ-11 analog phone extension and PBX
- Inbuilt PBX between BDU and extension phone to support office-on-the-bridge requirements
- 3.5mm audio output
- GNSS
- GPS
- GLONASS
- BeiDou
- Languages: English, Arabic, Chinese, Vietnamese, Japanese, French, Turkish, Bahasa, Tagalog

INCLUDED IN THE PACK

- Base terminal
- Active antenna
- 25m SAT cable
- 25m GPS cable
- Antenna pole mounting kit
- Power cable



THURAYA XT-PRO

ONE OF THE WORLD'S MOST ADVANCED SATELLITE PHONES

Designed for professional users, Thuraya XT-Pro is one of the most advanced satellite phones which is rugged and equipped with long battery life, ensuring connectivity no matter where you go.

Thuraya XT-Pro is the first satellite phone with built-in GPS, Beidou and Glonass capability for highest flexibility in all regions. It has a large display and comes with hardened Gorilla glass for harsh environments.

Using Thuraya XT-Pro, you can make phone calls, send messages in satellite mode and also use a satellite data connection to send and receive emails or browse the web with a connected laptop or PC. For emergencies, it has a dedicated SOS button with advanced navigation and tracking features.

No matter where you are within Thuraya's extensive coverage area or how remote your location, Thuraya XT-Pro keeps you connected.

CHARACTERISTICS

- Dimensions: 128 x 53 x 27 mm
- Weight: 212 g
- Call and messaging services: Satellite calls, SMS, SMS to email, fax
- Data services:
 - GmPRS: Up to 60/15 kbps (down/up)
 - Circuit switched 9.6 kbps
- Battery Talk Time: Up to 9 hours
- Battery Standby Time: Up to 100 hours
- Global Navigation Satellite System (GNSS):
 - GPS
 - BeiDou
 - Glonass

- Display: 2.4" toughened Gorilla glass outdoor display
- Ingress Protection: Jet water resistant, dust resistant, shock proof (IP55/IK05)
- 13 languages supported

INTERFACES

- Micro USB charger
- UDC jack for data transmission
- Earphone connector (3.5mm)
- Antenna connector for docking units

INCLUDED IN THE PACK

- Thuraya XT-PRO satellite phone
- Battery

- Universal travel charger
- Car charger
- USB data cable
- Support CD
- User guide

OPTIONAL ACCESSORIES

- Car charger
- Solar chargers
- Fixed Docking Units
- Indoor repeaters
- Spare batteries
- Spare travel chargers (with EU/UK/CHN/AUS plugs)
- Spare USB data cables

THURAYA XT-LITE

RELIABLE. SIMPLE. AFFORDABLE.

With the days of bulky satellite equipment long behind us, Thuraya XT-Lite is an exceptional product in the increasingly mobile satellite communications market. It is not just easy-to-use, light-weight, and technologically advanced, it is also lighter on the wallet and the best-value choice for your organisation annual budget.

Designed for cost-conscious users, Thuraya XT-Lite offers uninterrupted secure connectivity even in the most remote areas of the world. With Thuraya's unparalleled satellite network, you can enjoy crystal clear communications and access reliable data connections at the most cost-effective and unbeatable value, exceeding any other product in the satellite communications market.

FEATURES

- **Calls and text messages in satellite mode:** Make calls and send SMS messages in satellite mode whenever there is no terrestrial network available. The advanced omni-directional antenna ensures uninterrupted communications, offering seamless walk-and-talk functionality for calls-on-the-go.
- **Long-lasting battery life:** Thuraya XT-LITE enables reliable communications with a long-lasting battery which provides up to six hours talk time and up to 80 hours standby time.
- **Ease of use:** Simply charge your phone and ensure that your SIM card is working. It's that simple. You can then program the Thuraya XT-LITE to one of the 12 languages available.
- **Supported by the most robust and powerful satellite network:** Thuraya's satellite network is renowned for having the most reliable satellite coverage, including approximately 160 countries or two-thirds of the globe. The Thuraya XT-LITE enables you to receive a call notification even with

- the satellite antenna stowed, keeping you connected at all times. Additional features include: address book, alarms, calculator, calendar, call logs, conference calls, contact groups, speed dialing, stopwatch, world time, and many more.
- **Accessories:** Thuraya has developed a set of accessories for the XT-LITE to provide extended mobility when needed.

CHARACTERISTICS

- Dimensions: 128 x 53 x 27 mm
- Weight: 186 g
- Services: Satellite calls and SMS
- Network Frequency: L-Band
- Battery Talk Time: Up to 6 hours
- Battery Standby Time: Up to 80 hours
- Network Features: Call barring, call diverting, conference calls, call waiting, closed user groups, and voice mail
- Value-added Features: Address book, Alarms, Calendar, Calculator, Stopwatch, World time, and more

INTERFACES

- USB Data Cable (UDC) with USB connector
- Ear Jack (2.5 mm)
- DC Power

INCLUDED IN THE PACK

- Thuraya XT-Lite satellite phone
- Battery
- Universal travel charger
- USD data cable
- User guide

OPTIONAL ACCESSORIES

- Car charger
- Solar charger
- Indoor repeaters
- Earphones
- Spare batteries
- Spare travel chargers (with EU/UK/ CHN/AUS plugs)
- Spare data cables

THURAYA SATSLEEVE + SATSLEEVE HOTSPOT



GET SATELLITE CONNECTIVITY ON YOUR SMARTPHONE

The Thuraya SatSleeve Hotspot is a compact and lightweight satellite Wi-Fi hotspot. It provides users with voice and data connectivity on smartphones or tablets via Wi-Fi.

You remain connected wherever you go under the extended coverage of Thuraya's network. Even when you are on the move, you can make phone calls, send text messages and use your smartphone apps no matter the availability of local network.

Using Thuraya SatSleeve Hotspot means no more roaming charges! You benefit from a single rate over the 160 countries of Thuraya's network. Easy to deploy, you just need to download the application from the App Store or Google Play and then get connected in few seconds.

FEATURES

- **Calls and Text Messages in Satellite Mode:** Use your smartphone in satellite mode when there is no terrestrial network available. Make that all important call and send text messages using your existing list of contacts.
- **Email On-the-Go:** Send and receive emails no matter where your adventures take you.
- **Apps:** Access your favorite apps while you're on the move – Social Media, Instant Messaging, information apps and many more.
- **Compatibility:** The SatSleeve Hotspot App is available as a free download from the App Store or from Google Play. Available in 12 languages.

- **Easy-to-Use:** Simply connect your smartphone via Wi-Fi to the satellite unit and stay connected.
- **SOS Button:** The SatSleeve+ and SatSleeve Hotspot both come with a programmable SOS call button that works even if your smartphone isn't connected. The SOS button will make an outgoing call to a predefined number of your choice.

CHARACTERISTICS

- Dimensions: 142 x 69 x 38 mm
- Weight: 290 g
- Battery Life:
 - Talk Time up to 3 hours
 - WiFi continuously on: up to 9 hours
 - WiFi off: up to 70 hours*

(*incoming calls and SOS function still available on main unit)

- Voice
- Data: Download up to 60 Kbps /Upload up to 15 Kbps (GmPRS)
- Power Supply: Output DC 5V/2.0A (with EU/UK/CN/AUS adaptors)
- Operating Temperature: -10°C to +55°C
- Storage Temperature: -20°C to +70°C
- Battery: 3.7V Li-ion, 24400 mAh

CONNECTIVITY

- 3.5 mm jack for headset
- Micro USB for charging and upgrade
- DC charging jack

THURAYA X5-TOUCH

THE FIRST ANDROID SATELLITE & GSM PHONE

The Thuraya X5-Touch is the world's first Android™ based satellite & GSM phone offering unparalleled flexibility. It runs on the Android operating system and has a 5.2" full HD touchscreen for users who frequently move in and out of terrestrial coverage.

The Thuraya X5-Touch provides you with an uninterrupted network connection in any environment. It further bridges the gap between terrestrial and satellite communications through its full dual mode, and provides you the ability to have satellite and GSM smartphone modes "always on" simultaneously. It incorporates two nano SIM-card slots to easily switch between modes.

Its GMPRS is up to 60/15 kbps (download/upload). The first satellite phone, which runs on the Android platform from Google, has a dedicated SOS button, which is easy to use in time of distress. The product provides WiFi, Bluetooth and NFC connections. Now, you can stay in touch with only one smartphone.

10 REASONS WHY

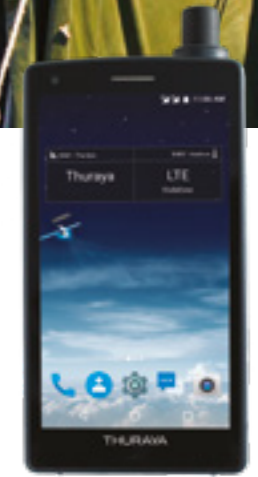
1. **State-of-the-art network coverage:** Terrestrial coverage across a range of market sectors, including remote areas.
2. **Dual mode capability:** 'Always on' SAT and GSM networks for a truly dual experience.
3. **Advanced navigation capability:** Ability to send current location details to pre-defined numbers based on pre-set time intervals, distance travelled, or movement between pre-set geofences.
4. **Dedicated SOS button:** Dedicated SOS button even when phone is switched off.
5. **Fully rugged phone:** Most rugged phone in the industry with IP67 standard and MIL 810 G/F compliance.
6. **Powerful battery:** Most powerful battery with a standby time of up to 100 hours.
7. **Cutting-edge antenna:** Omni-directional antenna that's designed to ensure enhanced mobility.
8. **Fully customisable apps:** Easily personalised phone experience with pre-loaded apps on the Google platform as well as access to apps from Google Play.

9. **Inbuilt phone sensors:** Sensors include gyroscope, accelerometer & geomagnetic, ALPS, and digital pressure.
10. **Active noise cancelling:** Multi-microphone active noise cancelling for crystal clear communications.

CHARACTERISTICS

- SIM cards
 - Satellite: 1 SAT SIM slot (nano-SIM)
 - GSM: 1 GSM SIM slot (nano-SIM)
- Data services
 - Satellite: GmPRS: Up to 60/15 kbps (download/upload) | Circuit switched: 9.6 kbps
 - LTE: Up to 300/150 mbps (download/upload)
- Dimensions: 145 x 78 x 24 mm
- Weight: 262 g
- Operating System: Android Nougat (7.1.2)
- Processor: Qualcomm Snapdragon 625, 2 GHz octa-core
- Battery: 3800 mAh

- Battery Talk Time: Up to 11 hours
- Battery Standby Time: Up to 100 hours
- Global Navigation Satellite System (GNSS): GPS, BeiDou, Glonass
- Display: 5.2" full HD LCD touchscreen (1920 x 1080) with Corning Gorilla® glass (capacitive display works also with gloves and in wet conditions)
- Ingress protection: Water resistant, dust resistant (IP67), Complies with MIL-Standard 810 G/F (shock, vibration, extreme temperature)
- Camera
 - Rear camera: 8MP with flash
 - Front camera: 2MP
- Memory
 - 16 GB eMMC memory
 - 2 GB RAM
 - Expandable memory up to 32 GB via microSD (optional)
- Other networks: Bluetooth 4.1, A2DP, LE; NFC; FM radio; WiFi 802.11 a/b/g/n/ac, WiFi direct, WiFi Hotspot



HUMANITARIAN
DOCKING
STATION



INMARSAT ISATPHONE 2

STAY CONNECTED IN THE MOST EXTREME AND REMOTE LOCATIONS

The IsatPhone 2 is designed to operate even in the most extreme conditions.

With a faster network registration (under 45 sec), an unrivalled battery life offering 8 hours talk time and 160 hours of standby time, users can always depend on the IsatPhone2. It provides excellent voice clarity, call stability and an easy-to-use interface with a large high visibility screen. Thanks to GPS location services, position can be sent by text message in case of emergency.

IsatPhone 2 is a tough phone for a tough world. The robust handset has been engineered to cope with anything that nature can throw at it.

Together, IsatPhone 2's design and capabilities – including safety features – make it ideal for the most demanding of users.

FEATURES

- Dependable connectivity
- High voice quality
- Voicemail, text and email messaging
- Extended battery capacity
- Assistance button – sends GPS location data and text to pre-set emergency number
- Tracking – sends location information
- Bluetooth for hands-free use
- Incoming call alerts with antenna stowed
- Ergonomic and ruggedised handset

CHARACTERISTICS

- Dimensions: 169 x 52 x 29 mm (without antenna) 169 x 75 x 29 mm (with antenna)
- Weight: 318 g (including battery)
- Display: high contrast colour screen
- Battery Talk Time: Up to 8 hours
- Battery Standby Time: Up to 160 hours
- Voice: 2.4kbps voice codec
- SMS: 160 characters supported
- GPS Location Data: view position and send as text/email
- Ingress Protection: IP65 / IK04
- Bluetooth 2.0 supported

INTERFACES

- Bluetooth 2.0
- Micro USB
- Audio Socket
- Antenna Port

INCLUDED IN THE PACK

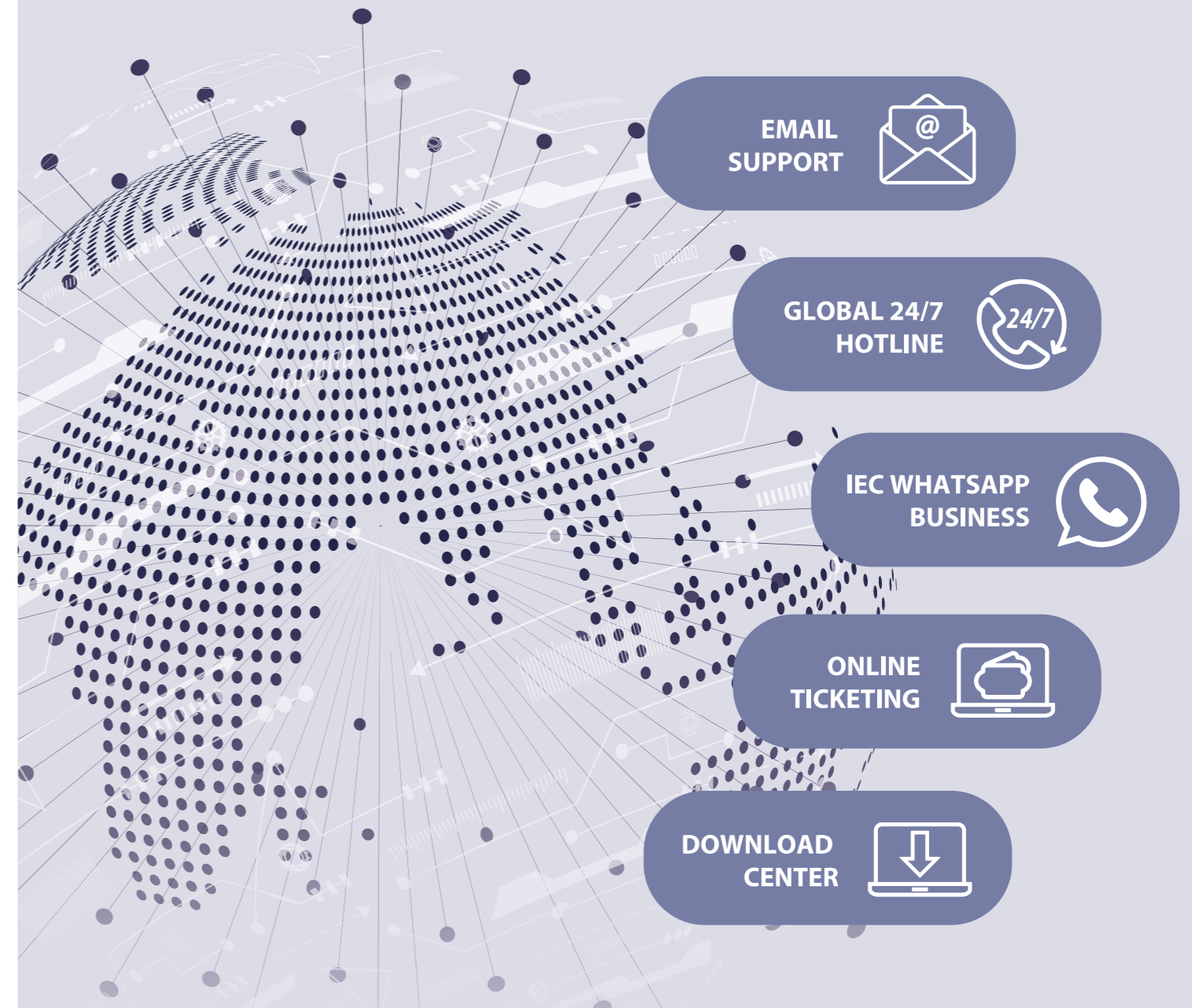
- IsatPhone 2 Handset
- Battery
- Chargers
- Main universal AC charger (4 adaptors)
- Car charger 10-30V
- Micro USB cable
- Wired handsfree headset
- Quick start guide (8 languages)
- Support USB memory driver
- Holster

IEC telecom

GLOBAL 24/7 TECHNICAL SUPPORT

FIVE DEDICATED CHANNELS OF SUPPORT

Our team is committed to maximising the benefits of smart satcom solutions for customer operations and translating them into increased efficiency, enhanced security, and future-proof technology



SATELLITE PRODUCTS | SMART SOLUTIONS | VALUE-ADDED SERVICES

iec-telecom.com

