

# TRAKSAT MARITIME SUITE

## Advanced GPS Tracking Platform

Purpose-built for maritime environments, offering multi-network support (cellular, satellite, and local AIS receivers) and an extensive range of integrated devices. Its design focuses on fleet visibility, data intelligence, and third-party interoperability:

### UNIVERSAL TRACKING SOLUTION

#### HARDWARE-AGNOSTIC

Works seamlessly with diverse tracking devices, from simple solar-powered units to more sophisticated on-board telematics.

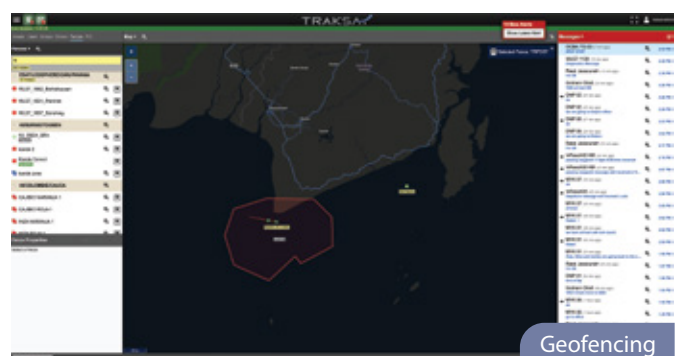
#### MULTI-NETWORK

Combines cellular coverage near coastlines, satellite services for open-ocean operations, and local AIS decoding to visualise nearby vessel traffic.

### REAL-TIME MAPPING & ALERTS

**CONTINUOUS MONITORING** of vessels, containers, and offshore assets in real-time.

**ADVANCED GEOFENCING** and drift detection; users receive immediate notifications in case of route deviations, unauthorised entry, or unexpected movements.



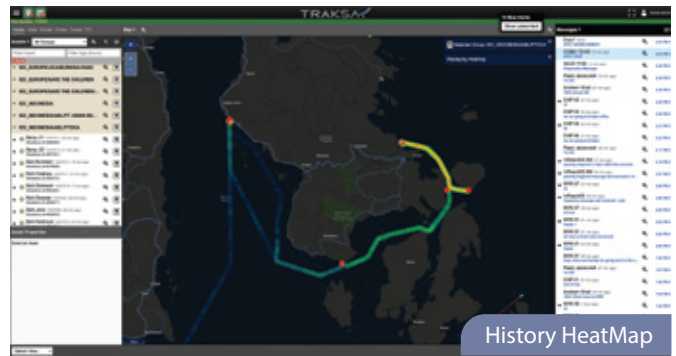
## DATA ANALYSIS & REPORTING

### VERSATILE DATA STREAMS

Historical tracking, fuel optimisation insights, and operational performance metrics.

### INTEROPERABILITY

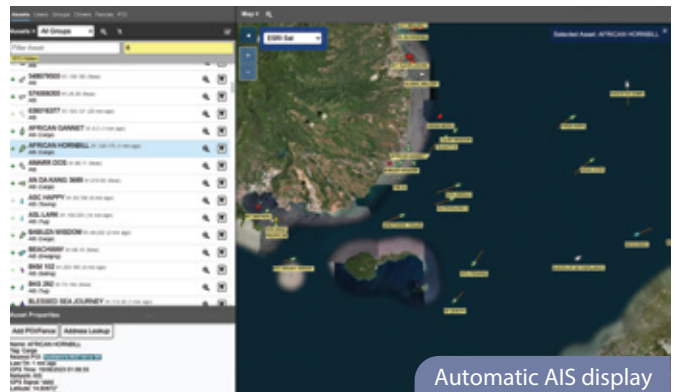
Integrates with external platforms – port authorities, logistics systems, or compliance databases – via APIs and data feeds.



## AIS INTEGRATION

**RECEIVES AND DECODES AIS SIGNALS** from local receivers, enabling full situational awareness in busy maritime corridors.

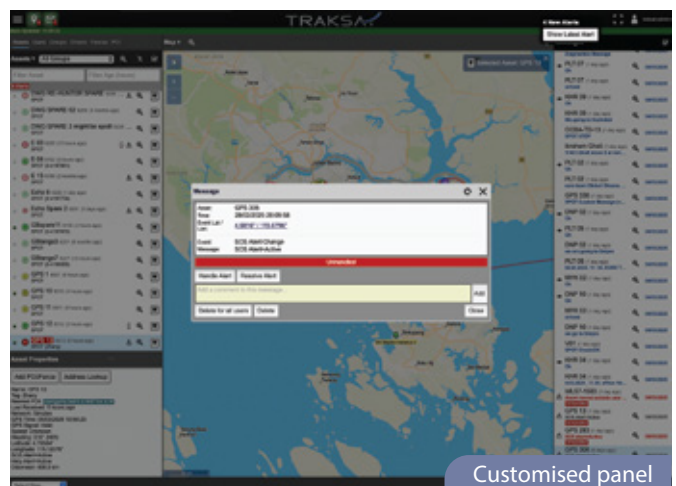
Useful for collision prevention, vessel identification, and port traffic management.



## SOS AND EVENT REPORTING

Ensure an efficient response to high-priority alarms with a comprehensive acknowledgment process and **interactive SOS control**, designed for the demands of the maritime sector.

As part of an advanced GPS platform, this feature enables seamless incident management by **customising event reporting** for speed limits, proximity alerts, and time-out warnings. Alerts can be relayed via email, SMS, or automated voice calls, ensuring rapid response and improved safety oversight in remote or high-risk maritime environments.



## CARGO & FLEET MANAGEMENT

Centralised real-time tracking for multiple vessels.

Historical reports, informed route optimisations, and port call scheduling.

## OFFSHORE OPERATIONS

Monitors service boats and equipment around wind farms or oil rigs.

Geofencing alerts protect restricted areas and help coordinate maintenance tasks.

## FISHING & RESEARCH VESSELS

Enables real-time visibility for compliance or scientific data collection.

Combines AIS data for improved safety and monitoring in regulated waters.